

### A. GMWIN Error Code

- ◆ **Warning! Cannot find library files. You should reassign library directory or copy library files in that directory!**  
It is the case that this library file is not in this directory when you open project-file.
- ◆ **HS Link Parameter Set Error**  
Download after making express link parameter again.
- ◆ **Abnormal HS Link parameter**  
It is the Cases that download fails because error causes while you download the program, so you should download again.
- ◆ **Abnormal Common RAM**  
Reboot the PLC.
- ◆ **Current variable type should be same as one before left parenthesis.**  
Data type of current Result in IL has to continue before beginning bracket and after ending bracket.
- ◆ **This Operator cannot be placed in parenthesis.**  
LD, LDN, JMP(C,N), CAL(C,N) and etc. cannot exist inside the bracket in IL, so delete it.  
Cannot define any more global variable.  
300 units of global variable is available.
- ◆ **Abnormal Basis parameter.**  
In Case of download failure during program download, do download again.
- ◆ **Cannot declare local variables over 32kBytes. Delete redundant variables.**  
PLC cannot use internal memory over 32k, so Delete the variable that in not used among the declared variable or reduce the number of variable.
- ◆ **Wrong Single variable name is given.**  
It is the case that wrong single variable name is given if you select Single task.  
(See also 4.4.7 task definition in GMWIN user guide)
- ◆ **Single variable task number over Maximum number : N**  
Reduce the number with deleting internal contact task in the task definition of the project window.  
Task number for Single task in between 48 to 63.  
(See also 4.4.7 task definition in GMWIN user guide)
- ◆ **Too many input or output parameters declared.**  
The maximum size of input/output parameter in 32
- ◆ **The given FB instance name refers to a different FB.**  
It causes when instance name of the function block has been used with another instance name of the function block. You should give different names to each function block.
- ◆ **Cannot add resources any more.**  
The maximum number of resource is 4 case of GM1.

- ◆ Cannot add any break point. If you want to add a break point, delete another one.  
The maximum number of break point is 32.
- ◆ No more In/Out variable can be added.  
The maximum number of input/output variable is 32 each.
- ◆ No more programs can be added.  
The maximum number of the program item is 180 in case of GM1-4, 90 in case of GM5.
- ◆ Data size over error..All: byte, using: N byte.  
It is the case that the memory size(N byte) which is used in the project exceeds(M byte) which is permitted in PLC. You should change your PLC version to the upper PLC version or reduce the declared variable in 32 each.
- ◆ Data type and Direct variable type are mismatched.  
It is the case that X, B, W, D, L which indicate the memory size do not match Data type, if you select user define of memory allocation.
- ◆ Data type of current result is not determined yet. Use " LD" command.  
It is the case that you make program, which has the integer or the direct variable, as the object without using LD command after CAL command in IL. USE LD command because you cannot know the data type of the object after CAL command.
- ◆ Cannot progress compiling because data type is not determined.  
Use the variable that has the data type or start the program from LD.
- ◆ Wrong data type is assigned.  
It is the case that the data type of the object and operator do not match when the object is given as variable.
- ◆ Abnormal Data RAM.  
Reboot the PLC.
- ◆ Library file<library file name> not found.  
It is the case that the library file cannot be found. Confirm
- ◆ Can not open<file name> of the library file.  
Confirm the existence of the selected library-file on the option in the declared directory.
- ◆ Can not open <file name> of the library file.  
Confirm the existence of the selected library-file on the option in the declared directory.
- ◆ Library-file error  
Library-file is damaged. Copy backup-library-file to library-directory again.
- ◆ Can' t find object in that library file.  
Confirm the existence of the object-file that is included in library on setting directory.
- ◆ Cannot open library file(S).  
Confirm the existence of the selected library-file on the option in the declared directory.
- ◆ This function/function block is not in the library.  
It is the case that the used function/function block is not in the library, which is inserted in the present project.  
Insert a related library file and compile/make again.

◆ F/FB is not registered in library

The function or the function block that is using now is not the basic library or the function/function block which is inserted in the project. It happens when the inserted library is deleted on the project after editing LD. Insert the function which is using now or the library which has function block.

◆ Cannot find function block ' <function block name?' from library files.

It is not inserted that the library-file that has function-block that is assigned in library insert list. In certain case, some CPU has not this function block, so please attend using function block.

◆ This is Rung comment area

It causes when insert the command to the area of rung comment, Command cannot be inserted in the rung comment area.

◆ This is Rung Comment area. Only line insertion is allowed here.

It causes when insert the command in rung comment area. It is impossible to insert and delete cells, possible to insert and delete row. If you want to delete the rung comment row, delete comment row.

◆ Rung comment cannot be longer than 170 characters.

The maximum size of the rung comment is 170 characters.

◆ This is Rung Comment area. To delete a rung comment by menu you must delete the whole line.

You have to delete all of row to delete the rung comment.

◆ The rung is too long!

The size of one rung is over 40 rows.  
You should make one rung under 40 rows.

◆ Label <label name> position error.

The label should be in front of the step.

NEXT:



◆ Too many characters in label.

The maximum size of label is 16 characters.

◆ Same label name is used more than twice.

The same label name is used more than twice.  
It is wrong that same label name exist.

◆ Label given cannot be longer than 16 characters.

It is the case that the label name is too long.

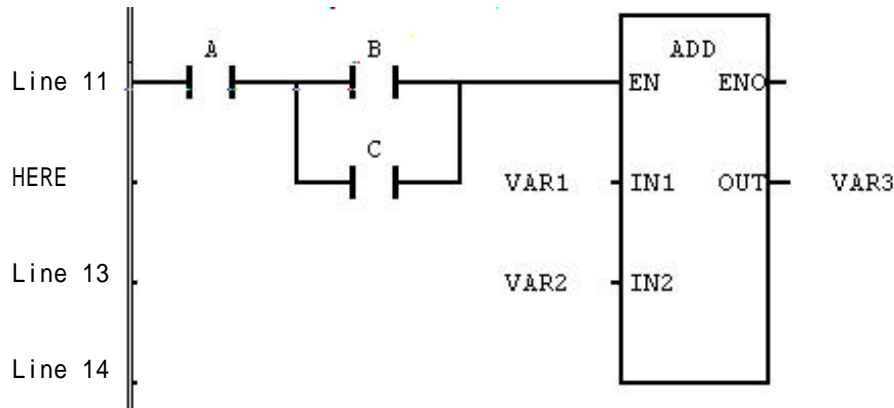
◆ The label name specified can't be allowed.

It causes when input label name is wrong, you use a special character that is not permitted, and name exceeds maximum size.

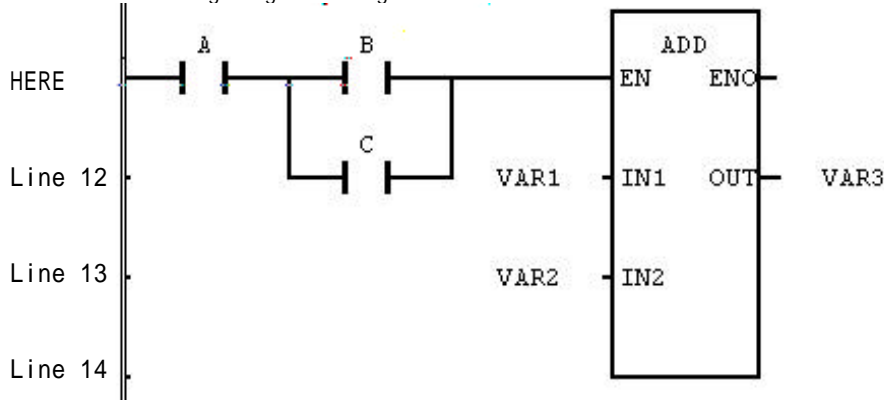
◆ Invalid label name.

If you input string that cannot be used, confirm it is the string that is declared as variable or the reserved character, and input again.

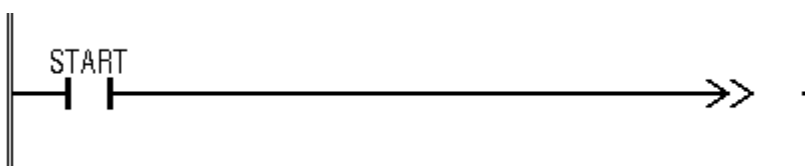
- ◆ In case of jumping to the label, it is impossible to jump between the main program and subroutine program with a reference of END.
- ◆ Label cannot be in the parenthesis.  
The label cannot be in the parenthesis.
- ◆ Label must be placed at start line of rung!  
The label is in the rung.



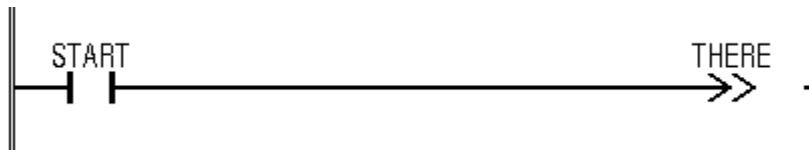
Move the label to the beginning row of rung.



- ◆ Cannot find the label.  
It is the case that the using label is not selected in JMP(C,N), SCAL(C,N) command.
- ◆ Label name has been defined in duplicate.  
Label name cannot be declared twice in the program.
- ◆ Label is not assigned!  
There is no the label name in the jump and subroutine call command.



You should label the label name to the jump or the subroutine call command.



- ◆ **Invalid resource name**  
You should input correct resource name for the identifier.  
(See also 3.1.1. Identifier command manual)
- ◆ **Resource name is duplicated.**  
It is the case that resource name is duplicated. You should give a different name.
- ◆ **Impossible to step over at the last step.**  
You should declare a break point to the position you want and debug.
- ◆ **Nothing can be inserted on the last column.**  
It causes when you insert cells right beside the last column, a right power line. You cannot insert cells at the left to the right power line
- ◆ **Can't proceed the stepover at the last row of the program**  
It is impossible to proceed with step-over at the last row of the program. You can go to the next break point by using debug run or step out.
- ◆ **Step-over cannot be done at the last line(rung) of LD program.**  
It is the case of trying to step over at the end of the program block, or function/function block. Step over cannot be continued, therefore try to debug run or debug run after declaration of a break point to the position you want.
- ◆ **Abnormal Memory Module**  
After confirmation of fitting with memory module, reboot the PLC.  
If you have an error again, replace the memory module.
- ◆ **Memory error**  
It is Memory allocation error to write input/output information from PLC to the computer.
- ◆ **Insufficient memory**  
The memory is not enough; you should shut down other application and restart, or expand the memory.
- ◆ **Memory Allocation Error**  
It is the case that it cannot be continued to running the tasking due to a lacking of memory. You should shut down other program that is being used and try again.
- ◆ **Insufficient memory**  
It is the case that it cannot use memory because main memory is not enough of other program except GMWIN is using a large memory. Shut down applications and try again or expand a memory.
- ◆ **Insufficient memory**  
The memory allocation has an error due to a lacking of memory in a using computer. Expand memory by shutting down programs that is not using now and try again.
- ◆ **Insufficient memory. Use after expand the memory.**  
It causes when system memory is not enough. Try again after shutting down other applications.

- ◆ Too many characters in the instruction.  
It is the case that the characters of inputted command are too long. The maximum command character has 17 characters.
- ◆ Cannot open down-load information file. Make project and write it to PLC  
Select COMFILE-MAKE in menu to make executive file, and select ONLINE-CONNECT+WRITE+RUN+MONITOR START in meny.
- ◆ Variables to be monitored are too many. Use user selction variables.  
It is the case that there are so many bundles of selected program instance variables that it cannot monitor. You should decrease the variable that you want to select.
- ◆ Module type Inconsistent Error  
It is the case that a declared module in the parameter and an installed module of PLC do not match. Download again after modification of module in wrong slot, restart, and parameter.
- ◆ Array number over  
You should input numbers in the range of declared array.
- ◆ Invalid array range  
You should input numbers in the range in the range of declared array.
- ◆ Invalid array index  
It is the case that there is no a selected array element. Confirm the size of array and input again.
- ◆ Array name cannot exceed 8 characters.  
You should declare array name within 8 characters.
- ◆ Invalid array size.  
The array size can be designated from 1 to 2048.
- ◆ The specified value is over the permitted range.  
It is the case that INDEXES that is inputted in monitor dialog box of array variable exceed the rage(0-2047).  
You should designate it below the maximum INDEX size.
- ◆ Data type of array element is mismatched.  
LD, ST command is effective for only Arrays having the same element number.
- ◆ Array index is out of range.  
It is the case that array number is bigger than element number of declared arry.
- ◆ Variable used as an array index should be INT type.  
Variable that indicates array element must be INT type.
- ◆ Battery Error  
Change the better.
- ◆ Integer is not within the permitted range.  
It causes the inputted integer is out of range.  
Input the correct integer again.

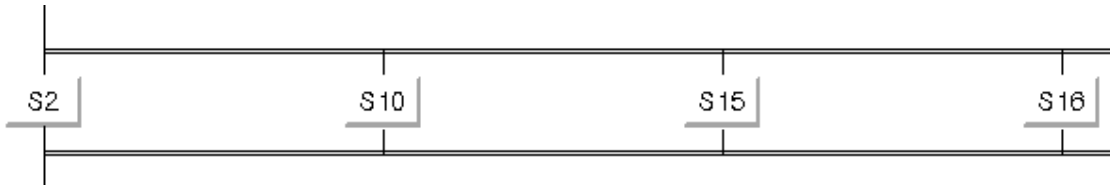
- ◆ Select a base number.  
It is the case that base number to monitor is not inputted.  
You should input the base number.
- ◆ Invalid base number  
It is the case that there is no base number to select. Confirm the base number and input again.
- ◆ Variable<variable name> not found. Make project and write it to PLC.  
It is the case that you cannot monitor by program to be changed.. Select COMFILE-MAKE in menu to make executive file, and select ONLINE-CONNECT+WRITE+RUN+ MONITOR START in menu.
- ◆ Variable <variable name> " type is not BOOL.  
If you declare action or transition as variable, it should be BOOL type.
- ◆ Variable <variable name> already exists.  
It is the case that there is same variable name that was declared before.
- ◆ Invalid value.  
You should input value of proper variable type.  
See also data type.
- ◆ Select a variable which is the object of break.  
It is the case that variable to execute variable break is not declared in variable break dialog box.
- ◆ Variable name is too long.  
It is the case that variable name is too long.  
The maximum size of general variable is 18 characters except special variable.
- ◆ This variable name exists already in a different attribute.  
It causes when variable name in block is already used in window that you want to add during block paste. You should change variable name of variable in block.
- ◆ The variable name can' t be allowed.  
The case inputted variable name is not correct.  
It is the case that you use special character(@,\$,etc) that cannot be used. Or insert blank in string. Also it causes length of string is over 18 characters.
- ◆ Wrong name is given.  
It is the case that you input the incorrect variable name. You should input a proper identifier(See also 3.1.1. Identifier command manual)
- ◆ Variable name is incorrect.  
It is the case that you input the incorrect variable name. You should input a proper identifier(See also 3.1.1. Identifier command manual).
- ◆ The variable type is not ARRAY  
It causes when variable of different type is inputted to window in which array variable type is inputted.
- ◆ Not defined as a BOOL variable  
It causes when you insert variable of different type at the position in which only BOOL variable can be inputted

◆ Variable type is not BOOL

The time chart can monitor only variable of BOOL type

◆ Cannot jump to label<label name> across simultaneous branch (See also SFC jump of command manual)

◆ Branch number over 8



Delete the branch.

◆ Branch end point cannot be located at block end..

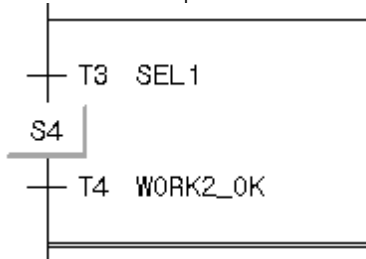
It can be at the end of block that only step, transition, label, and jumping.

◆ Branch start point cannot be located at block start.

It can be at the beginning of block that only step, transition, labeled.

◆ Step must be exist between branches

As you can see, it is the case that there is only transition between branch.  
You should insert step between branch.



◆ Cannot appoint the breakpoint

The label or comment row cannot designate breakpoint.

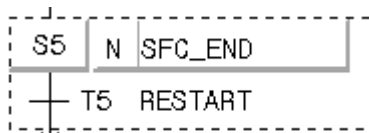
◆ Wrong number of scan break is defined.

It is the case that you input not integer but string in breaks frequency. Input integer value.

◆ Can't find the breaded source file.

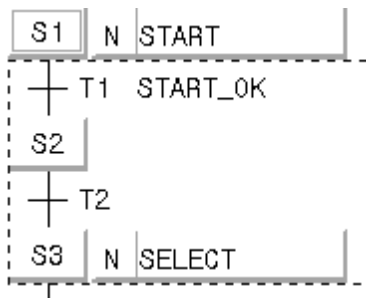
It causes when there is no the source file in case of executing step over in the state of beginning of debugging.

◆ If the start of block is step or label, the end should be transition.





- ◆ If the start of block is transition or jump, the end should be step.



- ◆ Abnormal Shutdown Error

On executing the program, it indicates there is an error of calculating of reserved data area in case of executing warm start by starting to calculate program from the beginning when you reboot the PLC after program is paused by unusual shut down of power.

- ◆ Input variable, which is not used, is found.

It is the case that you declared input variable but you did not use it.

- ◆ Local variable, which is not used, is found.

It is the case that you declared local variable, but you did not use it.

- ◆ Output variable, which is not used, is found.

It is the case that you declared output variable but you did not use it.

- ◆ There is no label to delete.

It is the case that you try to delete cell in first column that is being empty.

- ◆ Can't find Function Block in the included libraries.

It is the case that you do not insert library file which function block is included to project, though, you declared instance of function block. Insert library file.

- ◆ Constant range over detected.

You should give constant value that is proper to range of data type of Current result when you want to give constant, which is integer, real number as the object.

- ◆ Cannot create a new program file<program filename>

It is the case that there is program file, sheikh has already existed, or insufficient disk area, or other application is using it.

- ◆ You can call subroutine Label, which is after the END operator.

You should call the only label that locates after END when you use subroutine cal command

- ◆ END operator is needed when using subroutine call.

If you want to use a call subroutine command(ex. SCAL, etc) then you should distinguish main program and subroutine by using END.

- ◆ This variable is not defined.

It is the case that used the object is not declared as variable. Declare variable in variable declaration dialog box.

- ◆ Variables selected are too many to monitor

Delete selected variable by using delete key

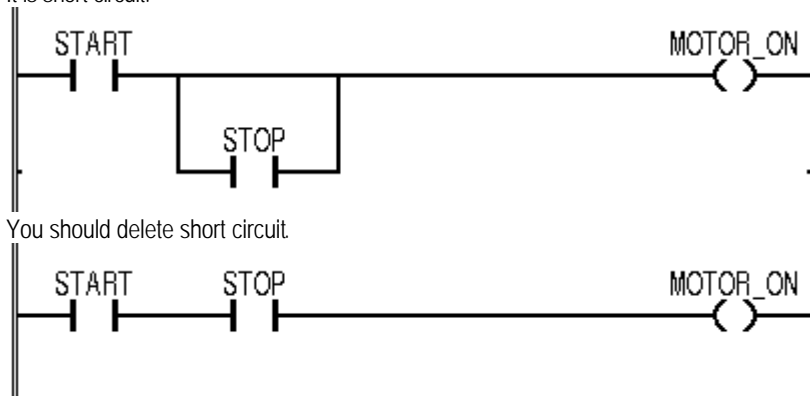
- ◆ There is nothing to move in the selected cell.

It causes when it is empty that the cell which you try to move.

- ◆ Selected library file is not a<GM\*> Library.(is PLC type)  
The version of selected library file does not match with GMWIN.
- ◆ Selected library file is not a LGIS GMWIN library file.  
The version of selected library file does not match. Confirm library-modified date.
- ◆ Cannot open selected library file.  
Confirm there is selected library file in the library directory that is selected in option.
- ◆ This object file is not a LGIS GMWIN object file.  
The version of selected object file does not match with GMWIN. Compile source file to GMWIN again.
- ◆ Label can't be placed on a rung comment area.  
You cannot designate label in comment.
- ◆ Variable break may not be performed because the program instance which contains that variable is disabled by Task Enabling  
It is the case that program instance to which declared variable belongs is prohibited by task executive condition when you declare variable break.
- ◆ The selected block is too large  
Deletion of block is possible only.  
It causes that selected block is too large to copy. Though you cannot copy it, you can delete selected block.

◆ Short circuit error

It is short circuit.



- ◆ Scan Watchdog Error  
On execution, it is the cases that scan time of program exceeds the scan delay watch time that is designated by parameter, Modify parameter or program by confirming scan delay watch time that is designated by parameter, then re-download and execute it again.
- ◆ Wrong number of scan is given.  
It is the case that frequency of scan is designated incorrectly when you designate scan break. You should designate frequency of scan between 1 to 65535.
- ◆ Stack area short  
It is a case of the function holds an internal variable too much. Limit is 256 bytes.
- ◆ Stack overflow error  
It causes when stack of the program is out of range while program is executing. Modify the program, re-download then execute it again.

## Appendix A. GMWIN Error Code

---

- ◆ STRING variables should be allocated at the address of multiple of 4.  
If you assign user define memory with the declaration of string variable, you should assign it to address of 4' multiple.
- ◆ Invalid string size.  
The maximum size of string variable is 30 characters.
- ◆ Invalid string size.  
The maximum size of string variable is 30 characters.
- ◆ String constant cannot exceed 16 letters.  
The maximum size of string variable is 30 characters but when you use integer on program, you can use integer below 16 characters.
- ◆ String size overflow.  
The string is fixed at maximum 30 characters, maximum 32 byte on memory.
- ◆ STRING variables should be addressed at multiple of 4 when directly assigned.  
You should give a direct address to address of 4' multiple because each string needs 32 byte memory.
- ◆ STRING initial value should start and end with apostrophe( ' )  
The string integer should begin/end with quotation mark( " )
- ◆ Slot-ID Error  
Reboot the PLC.
- ◆ Wrong exponent expression.  
It the case that incorrect expression of exponential function is found in real number expression.
- ◆ Wrong time literal expression.  
It is the case that expression of time /date which begins with D#, T#, DT# is wrong.
- ◆ Can' t open the serial port.  
Confirm there is other program which is using serial port or not, and if there is no then restart GMWIN.
- ◆ Abnormal Serial I/O chip  
Reboot the PLC
- ◆ Cannot open programs because of lack of system resource. Close rarely used windows and try to open again.  
It is the case that it cannot open program file due to lacking of resource. Close other application or close program window that is not necessary in GMWIN, and execute again.
- ◆ System Self-diagnose is Information/Abnormal CPU  
Reboot the PLC
- ◆ Down-load file is not same as one of PLC. \nWrite it to PLC!  
Select COMFILE-MAKE in menu to make executive file and Select ONLINE-CONNECT+WRITE+RUN+MONITOR START in menu.
- ◆ Cannot expand source file.  
It is the case that program source file is damaged.

◆ Abnormal Access path

It is the cases that download are failed because error happens on program download. You should download again.

◆ Access path name error in a access variable <Access variable name>

It the case that it cannot be found that global variable or direct variable in access path that is declared as <access variable name> (See also access variable editing)

◆ Access variable memory error

It is the case that memory is insufficient. Save all files, which is working, execute again after closing other application.

◆ Wrong access variable name is given.

It is the case that you input wrong access variable name. You should input a proper identifier (See also 3.1.1. Identifier command manual)

◆ Cannot define access variables any more.

The maximum size of access variable which can be declared is 128 in case of GM1~3, 64 in case of GM4~5.

◆ Action<action name> is used in SFC program. You can't delete this action.

If you want to delete this action, you should not use it in SFC program.

◆ Action name used in transition.

You should designate it to different name.

◆ Invalid action name

It is the case that you input wrong action name. You should input a proper identifier (See also 3.1.1. Identifier command manual)

◆ You cannot use TRANS variable in action program.

It is the case that you select TRANS variable in variable dialog box of action program. You cannot use TRANS variable in action program.

◆ Wrong initial value for an array element found.

It is the case that you give wrong string when you give initial array value or integer value is out of range.

◆ Blanking is error.

It is the case that you do not designate blank with integer value on print.

◆ Invalid margin.

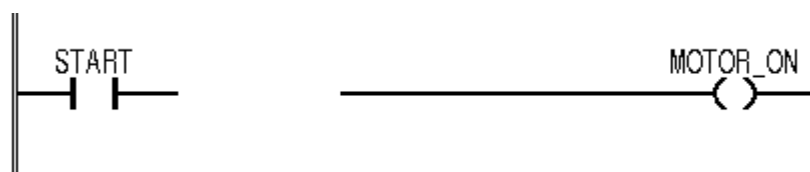
You should input number in left blank.

◆ Blanking is error

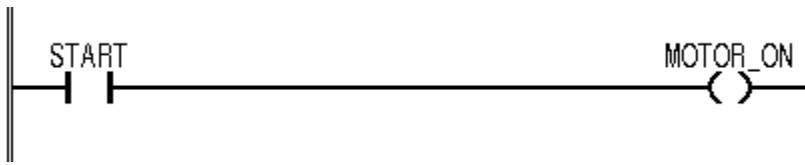
Confirm maximum range of blank, input again.

◆ Junk connection error

The power line does not connect.

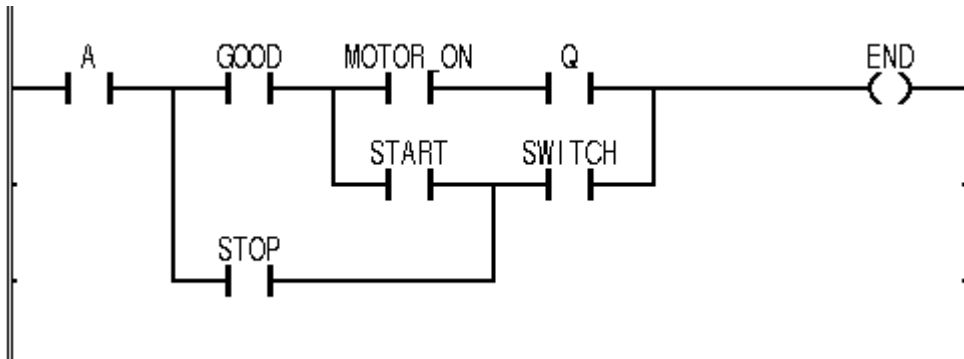


Connect power line.



### ◆ Logic error!

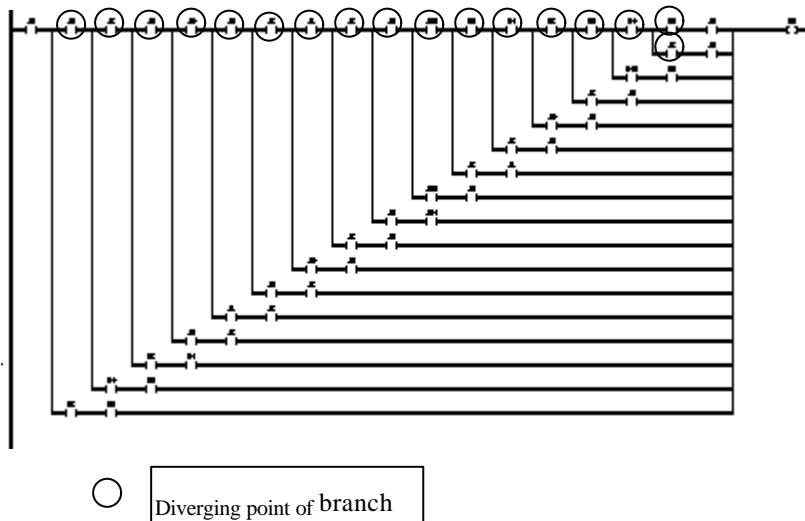
You make circuit that is not good for logic.



Use circuit that is good for logic.

### ◆ Logic branch is too deep!

The operating branch exceeds 16 levels in the operation that uses the contact.



You must modify the operating branch not to exceed 16 levels in the operation that uses the contact.

### ◆ Right bracket(')')is expected.

It is the case that number of left bracket is too many

### ◆ There exist contacts on the right.

It causes when there is other command at up or right of position when you insert coil/ The coil can be inserted when it is empty that the right area of the position where you want to inset the coil.

### ◆ Object file open error

Confirm object file in declared directory on option.

- ◆ Cannot write to object file.  
It is the case that there is no the file in the path, when you make new object file, other program is using it, and the disk capacity is insufficient.
- ◆ There needs no operand.  
It is the case that you input operand to command that does not need operand. You should delete the operand.
- ◆ Operand Syntax Error  
It is reserved word that is used in GMWIN or not a grammatical word.
- ◆ Needed a full input of operand.  
It is the case that the input of operand is more needed. You should input more operands.
- ◆ An operand name is omitted  
It causes when you input nothing in variable text box of variable dialog box.
- ◆ This move operation is not possible.  
It causes when you cannot insert the object to this position when you try to move the cell. If you want to move cell then sufficient area needs in the position, you cannot move it to the first column.
- ◆ External Device Error  
It notifies that slight error of peripheral device happens by user program on operating.
- ◆ External Device Fatal Error  
It notifies that fatal error of peripheral device happens by user program on operating. Fix peripheral device and operate again.
- ◆ Wrong interrupt input number is given.  
The maximum size of external contact input number is 0 to 15 in case of GM1~2, 0 to 7 in case of GM3~5
- ◆ Interrupt task number over. Maximum number: N  
You should reduce number by deleting external contact task in task definition of project window.
- ◆ Task number for Interrupt task is between 32 to 47 for GM1~3, 32 to 39 for GM4~5.  
The task number which is assign to external contact task is 32 to 47 in case of GM1~3, 32 to 39 in case of GM4~5.  
(See also 4.4.7 –task definition in GMWIN user guide)
- ◆ Left bracket '(' is expected.  
It is the case that number of right bracket is too many
- ◆ Left margin should be an integer between 0 to 30(mm)  
It is the case that it is not integer value of 0~30 mm that left blank on print.
- ◆ Memory allocation error!  
It is failed to take necessary memory on LD compile.  
You should take sufficient memory by shut down the window application program to execute except GMWIN.
- ◆ If you send the array, which contained an unfixed number of elements, to the parameter, it may be possible access a wrong position when you execute a program. So please use with care.  
It is warning, when designated an input parameter of array at the ANY\_ARRAY which was stated as VAR\_IN\_OUT, the value is changeable because of the memory position is out of a range of array it was designated as input is accessed under the internal code of function.

- ◆ Invalid position or other range error  
It causes when you insert command in wrong position. It is the case that command cannot be inserted in selected position  
It happens when you double click mouse in the position in which variable cannot be inserted.
- ◆ Invalid IP address.  
Confirm IP address of PLC, which you want to connect, connect again.
- ◆ There is no response.  
Connect the power of PLC again.
- ◆ Search string not found  
It is the case that selected string at find/change is not used in IL.
- ◆ This is Rung Comment area  
It causes when you insert the command to the area of rung comment.  
Command cannot be inserted in the rung comment area.
- ◆ Cannot select this variable type.  
The data break for this variable type cannot be declared in present PLC model.
- ◆ This string is a keyword.  
It is the case that inputted string is been using for reserved character.
- ◆ Cannot add this action name because it has been used already.  
You should add it as different name because it has been used already.
- ◆ This object file is not compiled for PLC.  
Load source file and compile again.
- ◆ This object file is compiled as a Program Block.  
The selected file is program block. Select function/function block source program again.
- ◆ This element can't be deleted.  
You cannot SFC element that is incorrect for SFC composition.
- ◆ This element can't be inserted at this position.  
It causes when you insert SFC element in position that is incorrect for SFC composition.
- ◆ Break points cannot be set here.  
You cannot declare break point at the position.  
Cannot declare break point on contacts, coils, and first column of function/function block and END.
- ◆ Input contacts cannot be placed here.  
It causes when you cannot insert input in selected position.
- ◆ Insertion of empty cell is not possible at this location.  
It causes when row that you try to insert cell is full. It is the case that you cannot insert cell any more.
- ◆ This transition name already exists.  
You should add it as another name because it has been used already.

- ◆ This file is not a GMWIN source file.  
It is the case that selected file is not GMWIN source file or damaged source file.
- ◆ This project was not made an execution file. Make project and write it to PLC!  
Select COMFILE-MAKE in menu to make executive file, and select ONLINE-CONNECT+WRITE+RUN+MONITOR START in menu.
- ◆ This Flag/Keyword is READ\_ONLY.(Cannot Store)  
It is the case that you use command like ST, S, and R in read only flag/keyword or output of function/function block.
- ◆ Cannot write value to this flag.  
You cannot change the value because this flag is read only.
- ◆ This flag is not used with given PLC type.  
Confirm it can be used or not, because available flag is different in PLC CPU mode or GM1~5.
- ◆ END can't be placed in this line.  
It causes when you input END again in line that you already inputted it.  
You can input end in empty line.
- ◆ Cannot assign break point at this element.  
In SFC, You can declare break point only in step.
- ◆ Library file already exists.  
The additional library file has already existed in library.
- ◆ F/FB name you want to insert is already exists is the library.  
The additional library file has already existed in library.
- ◆ This interrupt input number is already used in another task.  
It is the case that external contact input number is duplicated.
- ◆ This task number is already used.  
It is the case that there is same variable name that was declared before.
- ◆ Variable already exists.  
It the case that there is same accesses variable name which was declared before.
- ◆ Access variable <access variable name> already exists.  
It is the case that there is same accesses variable name which was declared before.
- ◆ Instance name is already defined.  
It is case that there is same task name that was declared before.
- ◆ This Task name is already defined.  
It is the case that there is same task name that was defined before.
- ◆ Same data type as previous result expected.  
You should use same data type object that is same to current result that is previous operating result according to operator model in IL.



## Appendix A. GMWIN Error Code

---

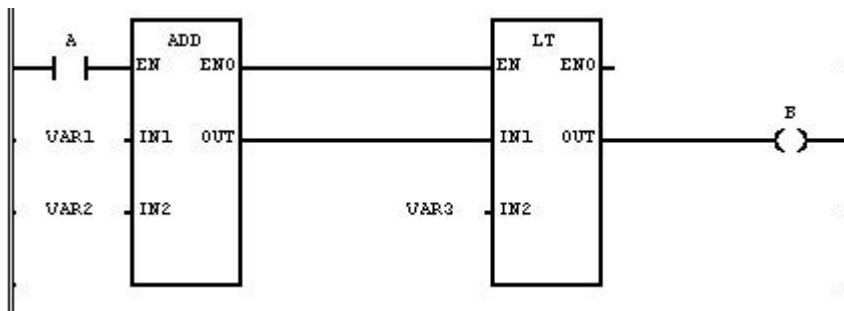
### ◆ I/O contact Error

It is the case that one of module that is composes of duality is error, replace module of wrong slot, and executes again.

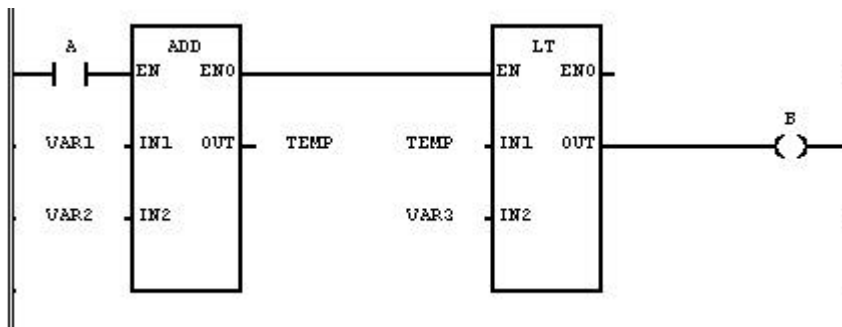
- ◆ FB instance string cannot exceed 8 characters.  
The instance name cannot exceed eight characters.  
Because general variable that includes instance name and input/output variable name is used in program.
- ◆ Wrong instance name is given.  
It is the case that you input wrong instance name. You should input correct instance name for the identifier.  
(See also 3.1.1. Identifier command manual)
- ◆ Wrong instance name is given.  
You should input correct instance name for the identifier.  
(See also 3.1.1. Identifier command manual)
- ◆ Multiple use for interrupt number N.  
Confirm tasks, which are declared as number N, are over two. Do not duplicate it.
- ◆ Abnormal Interrupt Controller  
Connect power again.
- ◆ This keyword is READ\_ONLY.  
It is the case that you cannot use read-only flag as object of ST command.
- ◆ Temporary variables can't be made!  
It failed to create temporary variable on LD compile.  
Temporary variable is created in TEMP directory. So it causes when capacity of TEMP directory is insufficient or disk has an error.  
If capacity is not enough then you should delete unnecessary file and if disk has an error then replace the disk.
- ◆ Temporary file read/seek error!  
It is failed to create/read temporary variable on LD compile.  
Temporary variable is created in TEMP directory. So it causes when capacity of TEMP directory is insufficient or disk has an error.  
If capacity is not enough then you should delete unnecessary file and if disk has an error then replace the disk.
- ◆ Cannot Edit/Delete In/Out variables here.  
It is possible input/output variable to be modified/deleted in input/output variable dialog box.
- ◆ Invalid line number.  
You should input the input value, which is proper to range.
- ◆ You must not exceed the maximum input number.  
It causes when you define number of input variable more than maximum number when you insert the function that is varied to number of input variable
- ◆ Cannot Store(or STN, S, R) to variables defined as VAR\_INPUT.  
You cannot use command (ex: ST, S, R, etc) that input the value in input variable.
- ◆ Inputted value is not number.  
The inputted number is not number.
- ◆ There must be at least two input variables.  
You should define over two numbers of input variable at least when you insert the function that is varied to number of input variable,  
Because of the first variable in function should be EN.

## Appendix A. GMWIN Error Code

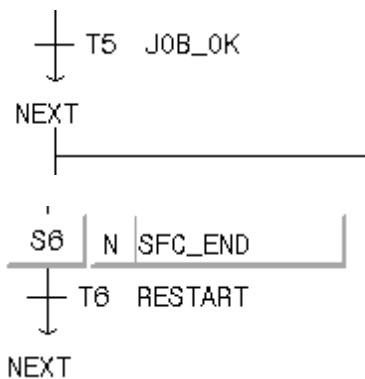
- ◆ The specified variable type is not allowed for this Fun/FB.  
It causes when inputted variable type is differ from input/output variable type of function/function block.
- ◆ The type of inputted variable is not matched with F/FB.  
It is the case that the type of inputted variable is not matched with the I/O variable of F/FB.
- ◆ Cannot find such variable type.  
It is the case that date type of the object does not match operator when you give an object as variable.
- ◆ Power flow must be only one!  
There are several power lines in one rung.



You should one power line in one rung and input the other variable directly.



- ◆ Jump %s position error.  
The jump should be next to the transition where is at end of the selected branch of SFC program.

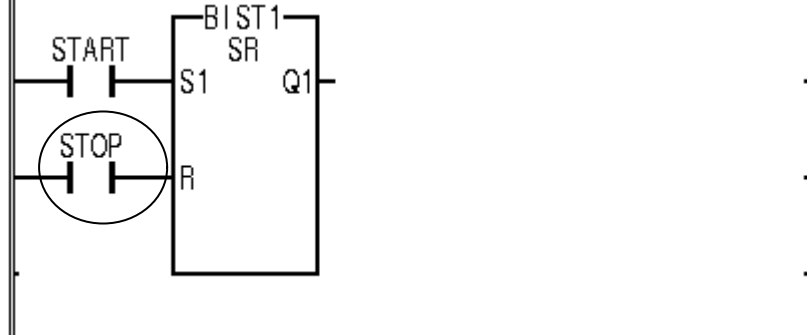


◆ Label %s not found.

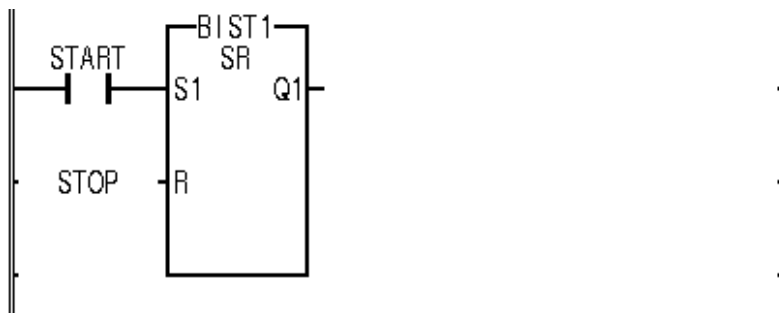
There is no label name<label name>, which is same to jump name. Confirm that there is label name, which is same to jump name.

◆ Contact can' t placed in this area!

The contact should be where variable or integer must be.



Attach the variable or integer.



◆ You must enter an integer

It causes when you input real number value(ex:9.43)in input window to input integer.

◆ Interval task number over. Maximum number : N.

You should reduce number by deleting interval task in task definition of project window.

◆ Task number for interval task in between 0 to 31.

(See also 4.4.7 task definition in GMWIN user guide)

◆ Wrong interval value is given.

It is the case that you give wrong interval time in case of selection the interval task.

(See also 4.4.7 task definition in GMWIN user guide).

◆ Given value string is wrong or over-ranged.

It is the cases that string of given variable value are wrong of out of range on selecting variable value break.

◆ A variable of same name as given function name is already defined.

It is the case that there is same variable name among the variables, which is declared already when you try to modify function name to another in program property dialog box.

◆ Warning : time constant unit under 10 ms will be ignored.

On definition of interval task, time value of below 10ms unit is negligible.

## Appendix A. GMWIN Error Code

---

- ◆ Warning : Included library file library filename' s not for GM? So that F/FBs in that library will not be shown and used.

It is the case that you change PLC type for project or insert library that is not matched in proper type.

- ◆ Warning : Included library file library filename' s not for PLC so that F/FBs in that library will not be shown and used.

It is the case that the object file' s version to be insert is not matched to library.

- ◆ Duplicated label. Found.

You cannot declare label repeatedly.

- ◆ Abnormal Extended Power

It causes when PLC operation is abnormal because power module of the increasing base has an error.

- ◆ You cannot delete this item.

You cannot delete the item besides program and resource(over two) in project item.

- ◆ There is no selected string.

You should input the name in name text box.

- ◆ The margin given is too large.

It causes when blank is too large in printer setup.

Decrease blank and input again.

- ◆ Too large margin

You should input the number that is below 30 in left blank.

- ◆ Invalid direct address.

You should modify direct variable name.

(See. Also 3.3.1 variable expression in command manual)

- ◆ Wrong directly represented variable expression found.

It is the case that it is wrong that direct variable expression starting with %I, %Q, %M.

- ◆ Wrong directly assigned memory allocation is found.

It is the cases that direct variable allocation in case that you select user definition of memory allocation.(See also 3.3.1 variable expression in command manual)

- ◆ Invalid direct variable range.

Two variable must be same area(same base, same slot), same type.

Wrong example	Correct example	Note
%10.1.0-%10.2.10	%10.1.0-%10.1.10	Different slot number
%MW10-%MB12	%MW10-%MB12	Different type

- ◆ Not found.

It causes when there is no anymore object(string or command) to be found.

- ◆ Contacts cannot be placed in the first column.

It causes when you insert the cell at the first column. You cannot insert cell at the first column.

◆ Wrong initial value is assigned.

It is case that the initial value designation is wrong.

◆ Initial value is not correctly given.

It is the case that initial value is wrong.

(See also 3.1.1. Identifier command manual)

◆ Initial value is out of range.

It is the case that initial value is out of range which data type allow when you declare initial value.

◆ You must not exceed the maximum line number.

It is the case that you input number which is bigger than maximum in find dialog box.

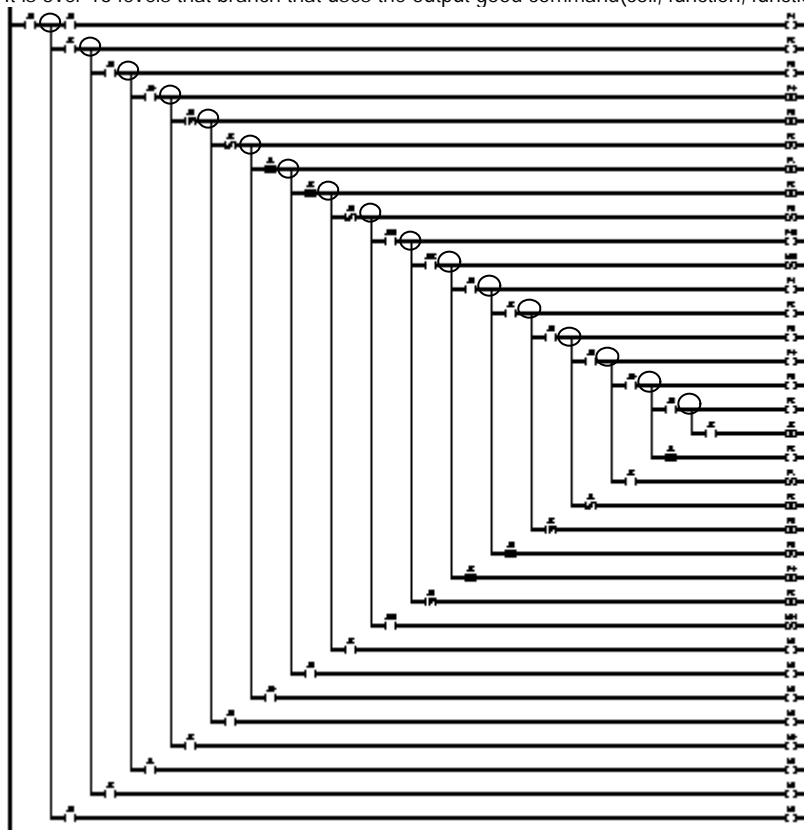
You should value that is below the number which is bigger than maximum number that exists in file.

◆ Enter or select on e object file to add.

Confirm that object fill is in the directory on option.

◆ Output branch is too deep!

It is over 16 levels that branch that uses the output good command(coil, function, function block, jump, return, subroutine call)



○ Branch point

You should make the branch that uses the output good command not to be over 16 level.

◆ Configuration global variable are declared too many.Maximum 4K Byte.

You should delete unnecessary configuration global variable.

◆ Size of configuration global variables cannot exceed 4K byte.

Total size of the configuration global variable cannot exceed 4K Byte

## Appendix A. GMWIN Error Code

---

You should delete unnecessary configuration global variable.

◆ File related error happened while compiling.

It is case that you have difficulty to deal with file because there is no file that is used temporarily and is used in open/close object file or disk capacity is insufficient on compiling.

◆ Maybe there' ll be some errors in compiling.

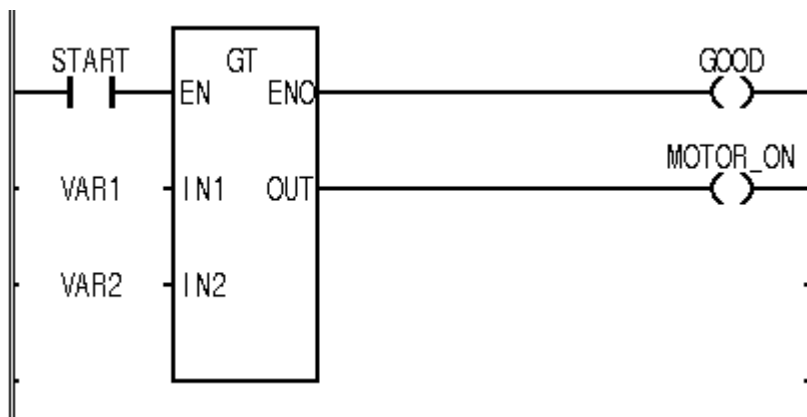
It is the case that you cancel without declaring same name for duplicated variable on attach operating. Error can be caused on compiling because over two types for same variable name are needed.

◆ There is nothing to compile.

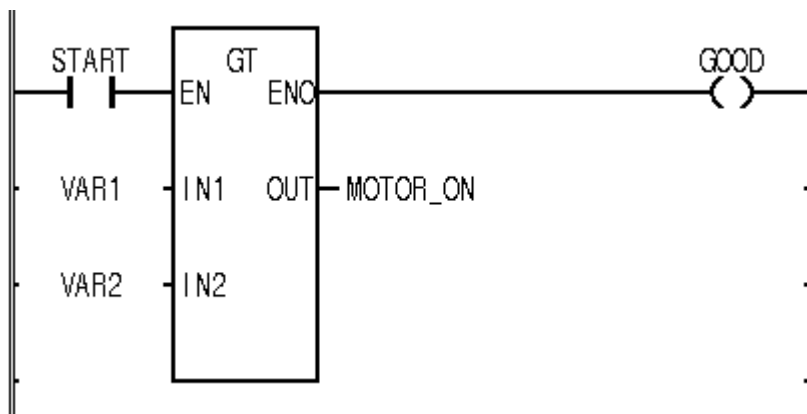
It is the case that there is no content to compile because of nothing in program content.

◆ Coil cant be placed in this area.

The coil is in the position, which the variable or the integer or the integer connects to.



Attach the variable or integer.



◆ Cannot Store from/to different size of array.

LD, ST command is effective for only Arrays having the same element number.

◆ Maybe out of memory(from clipboard routines)

It causes when memory cannot be taken because memory is not enough in the system on dealing with clipboard

◆ Keyword cannot be used as an identifier.

The reserved word(variable name etc) cannot use as identifier.

(See. Also 3.3.3. reserved variable and 3.4 reserved word in command manual)



## Appendix A. GMWIN Error Code

---

◆ Invalid time value.

You should designate time value if you select the action qualifier among D, L, SD, SL, and DS, confirm that time value is imputed correctly or not.

(See also 3.1.2.3.1 proceeding time in command manual)

◆ Task <task name> not bound.

It is the case that used task name is not defined in program definition

Confirm task name of task and program definition in project.

◆ Bool type variable of task ,task name. Not found.

It is the case that the used variable is not declared as the global variable in case that you select the single task executive condition.

Confirm ruse variable name and global variable name in task definition.

◆ Task memory error.

It is the case that memory is not enough. Shut down other application after saving all files that is executing, and restart.

◆ Wrong task number is given.

You should give proper task number according to kind of task.

(See also 4.4.7 task definition in GMWIN user guide)

◆ Wrong task name is given.

It is case that you input wrong task name. You should input correct task name for the identifier.

(See also 3.1.1. Identifier command manual)

◆ Task Conflict Error

It causes when same task is demanded to execute repeatedly on use program operation.

◆ Communication Internal Error

Disconnect the connection of PLC and GMWIN and connect again.

◆ Composition of Communication Module Error

It is occurred when installed Communication Module more than 4 units or 8 units included Computer Communication Module.

◆ Communication Error

Communication error is occurred for bring a data from PLC

◆ Transition <transition name> is used. You can't delete this transition.

If you want to delete this transition you should not use it in SFC program.

◆ Transition <transition name> has no program.

You should make executive condition program in transition.

◆ Invalid transition name

It is the case that you input wrong transition name. You should input correct transition name for the identifier.

(See also 3.1.1 Identifier command manual)

◆ S/C Module Interface Error

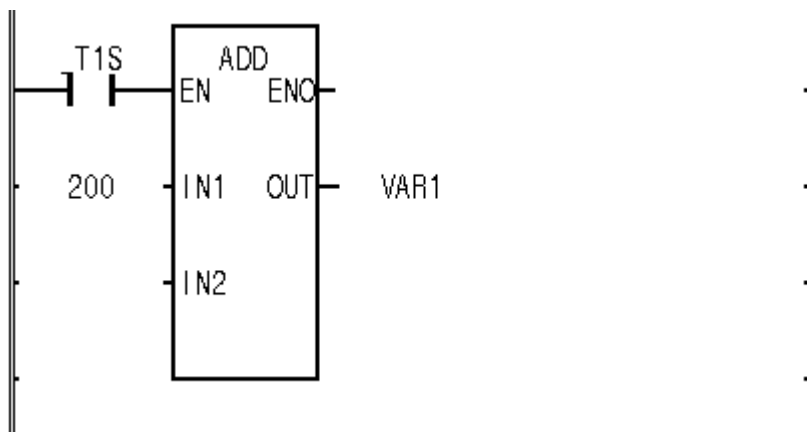
It is the case that data of special/communication module do not access normally on operating, so replace module of wrong slot and execute again.

◆ Cannot save file<file name>to the disk.

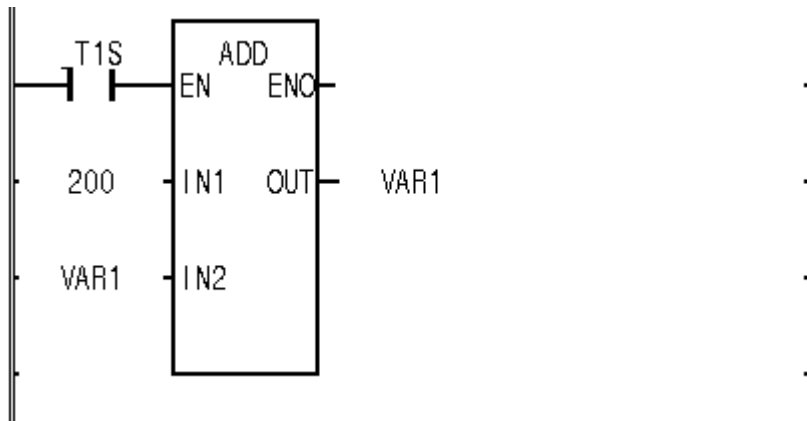
It is the case that other program is using on saving project file or there is insufficient capacity to save shut down other program or enlarge save capacity of disk.

- ◆ Can't print %s.  
It is the case that there is no printer or file to print does not exist.
- ◆ Cannot open file(S).  
When you open/make the file, it is the case that it does not exist in the path or other program is using it or disk capacity is insufficient.
- ◆ Cannot find function<function name>  
This function is not in selected library.
- ◆ Can't find FB<function block name> in the included libraries.  
It is the case that it is not in library life that function/function block which is used in the program. Register this function/function block in library file and insert this library to project.
- ◆ Line insertion is impossible in case the I/Os of FUN/FB have some contacts.  
If you try to insert line in the line that function/function block exists then you should insert the cell without changing the function/function block.  
However, in case that contact is connected to input/output of function/function block, you cannot insert line.
- ◆ FB(Function block name) is not existed in inserted libraries.  
It is the case that it is not inserted that library file which has function block that is assigned in library insert list of present project. In certain case, some CPU has not this function block, so please attend using function block.
- ◆ Wrong function block name is given.  
It is the case that wrong function block name is given in program property dialog box or in case of making new program.
- ◆ Function block instance name cannot exceed eight characters.  
The function block instance name should be declared below eight characters.
- ◆ Not defined as a FB instance  
It causes when function block instance name has been using as other general variable.
- ◆ Function block instance name cannot have initial value.  
It is the case that you declare initial value with defining data type as function block instance.
- ◆ Cannot edit/delete function block independently.  
Function block output is the item that is added/deleted automatically on declaration or deletion of function block. So function block output cannot modify/delete.
- ◆ Function Block should have at least 1 BOOL variable at the input & output parameter each and the first I/O variable must be BOOL.  
Function block has to have over one BOOL variable in input/output for LD power line and first input/output variable must be BOOL.
- ◆ Cannot add object of function block to the library of function.  
Library does not match the form of program. Extension of library in function block is nFB.  
(N is PLC type. For example : if library file name is USER and PLC is GM4 then user.4fb)
- ◆ Not defined as a FB instance.  
It is the case that object of CAL(C,N) command is not declared as function block instance.

- ◆ The first input variable of Function Block should be BOOL typed.  
First input variable of function block must be BOOL type because of power line in LD.
- ◆ The first output variable of Function Block should be BOOL typed.  
First output variable of function block must be BOOL type because of power line in LD.
- ◆ Cannot assign a value to an output variable of function block.  
You should give variable that will take the operating result to the output of function block.
- ◆ The appropriate F/FB library does not exist. Base type may not match the FB library.  
It is the case that wrong function name is given in program property dialog box or in case of making new program.
- ◆ Wrong function name is given.  
It is the case that wrong function name is given in program property dialog box or in case of making new program.
- ◆ There is no function/function block library.  
It causes when it is not inserted in project that library that includes using function/function block.
- ◆ Contacts cannot be placed in Fun/FB area.  
It causes when you try to insert contact in function/function block area.
- ◆ Adjacent line in Fun/FB area.  
Other command cannot be inserted in function/function block.
- ◆ You should use operand that is proper to data type of function/function block input parameter.  
You should input object of proper data type to the input parameter on inputting function/function block input parameter.
- ◆ Input of F/FB is not assigned!  
You do not declare input value(Variable, integer) to input of the function/function block.



You should connect power line, integer, variable, etc to input of the function/function block

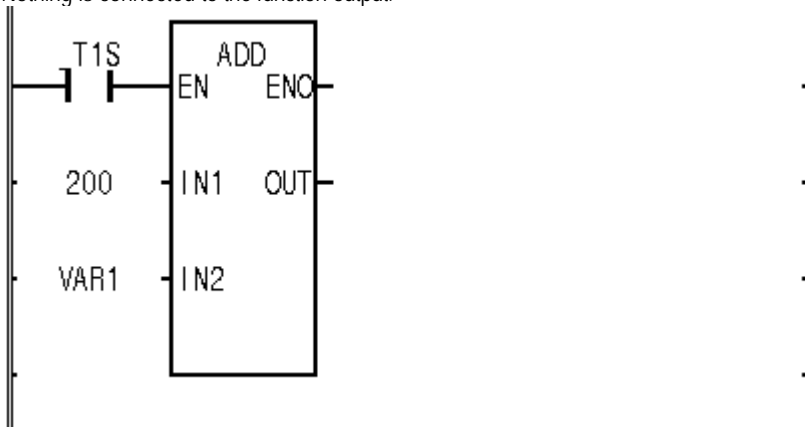


- ◆ Do you wish to delete the Fun/FBs along the way  
It is the case that function/function block is in deleted line.  
If you want to delete function/function block also then push YES button, otherwise push NO button. If you want to cancel cell deletion then push CANCEL button.
- ◆ Cannot use directly represented variable expression as an operand In F/FB.  
You cannot use direct variable expression in function/function block.
- ◆ Function/function block should have at least one input & output parameter each.  
Function/function block has to have over one variable in input/output. You can add input/output variable in input/output variable dialog box.
- ◆ Function/function block cannot call itself.  
It is the case that function/function block calls itself, so function/function block cannot call itself because it makes infinite loop or computer to be unstable.
- ◆ Function/function block "<F/FB name>" you want to include is already loaded from library file named "<library filename>". Do you want to replace it with one in "<library filename>" ?  
It is the message whether you change previous file or not when it is loaded from other library that object file that has same name one that is loaded before.
- ◆ You cannot load F/FB named "<F/FB name>" in which is already loaded. FB  
After changing the name of user definition function/function block, insert it to the library again.
- ◆ Insertion is not possible because Fun/FB too close.  
It is the case that you try to delete cell between function/function block.  
It causes when capacity to write input/output variable is not enough after deleting cell.
- ◆ There' s not enough space for Fun/FB.  
It is the case that function/function block cannot be inserted because free space is insufficient in the position in which function/function block is inserted.  
When you insert function/function block, you should it in the blank that has 3 lines at least for input/output variable space.
- ◆ String constants cannot be used in Function  
It is the case that you use string integer in function.

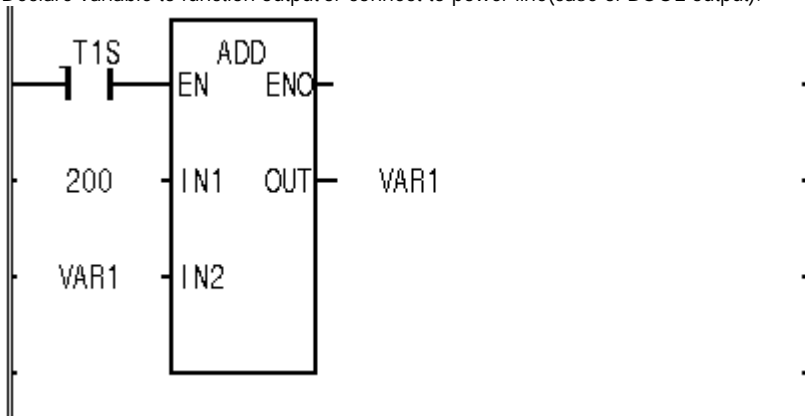
## Appendix A. GMWIN Error Code

---

- ◆ Cannot declare or call any Function Block in Function.  
It is the case that you declare/call function block in function.
- ◆ Functions can't be changed to other elements.  
It is the case that you select function as command to replace in dialog box.  
You cannot use REPLACE command for the function.
- ◆ Function cannot have VAR\_OUTPUT variable.  
Function cannot have VAR\_OUTPUT variable.
- ◆ Cannot assign an initial value to a local variable of Function.  
There is no variable, which can declare initial value in function.
- ◆ Cannot add function object to Function Block Library.  
The library does not match the form of program to add.  
Extension of library in function block is nFU.  
(N is PLC type. For example, if library file name is USER and PLC is GM\$ then USER.4FU).
- ◆ Return value of function is indeterminate.  
It is the case that the function does not work, because you do not insert the output value.  
If you input the value to the output value in case of the function, the function works.
- ◆ Output of function is not assigned!  
Nothing is connected to the function output.



Declare variable to function output or connect to power line(case of BOOL output).



- ◆ You cannot edit standard library files. Select again.  
The general library cannot be used by modifying it with user's will. You can select only user definition library to executing modification, deletion.
- ◆ Standard libraries are already loaded.  
The general library was already loaded in memory.
- ◆ Fuse Cutoff Error  
It causes the case that FUSE break of FUSE attach module on operating. Replace the fuse of wrong slot and execute again.
- ◆ Program<program name> is not defined in project, Make project and write it to plc.  
Select COMFILE-MAKE in menu to make executive file, and  
Select ONLINE-CONNECT+WRITE+RUN+MONITOR START in menu.
- ◆ Program <program name> not found.  
It causes when there is no program file that is relevant to used program name in program definition. Confirm that there is program name. SRC in relevant directory.
- ◆ Program Error  
It is the case that program to operate is abnormal. Download again.
- ◆ Program Abnormal  
It is the case of an abnormal is occurred in download a program. Download again.
- ◆ Program define number over.  
  
Delete program definition.  
You declare too many program definition of project.  
You should reduce program definition by Selecting the project-project item delete in menu.
- ◆ Program Code Error  
It is the case that command that cannot be decoded is met on user program operating.  
Download program again and execute again.
- ◆ Program size over error. Total: M bytes, Used N bytes  
It is the case that program size (N bytes) is used in project exceeds capable program size(M bytes) is used in project exceeds capable program size (M bytes) in present PLC.  
Change PLC model to upper model or reduce program size.
- ◆ Program file;<program file name>' has already opened.  
It is the case that you declare filename which has already opened when you make new project or program.
- ◆ Program file'<program file name>' has already existed.  
It is the case that you declare file name which has already existed when you make new project or program.
- ◆ Program file name does not defined.  
It is the case that you are not surd that you open which item because program file name of this item does not defined when you open the window by double click the program item in project.  
Give program file name.
- ◆ Abnormal Program RAM  
Reboot the PLC.

◆ FB<FB name> not found in a library!

It is the case that function block which is used in program is not in library file.  
Register relevant function block to library file and insert this library to project.

◆ Condense rate for printing is out of range. Check condense range.

It causes when compression proportion is out of range.

◆ Flay array index is out of range.

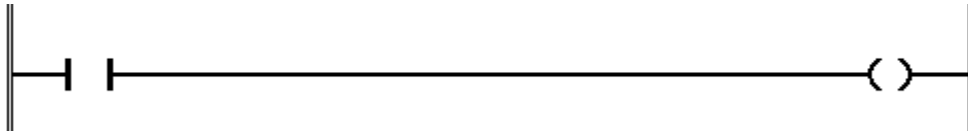
You have not to use it over defined array number in case of using flag element that is defined as array.

◆ There needs no operand.

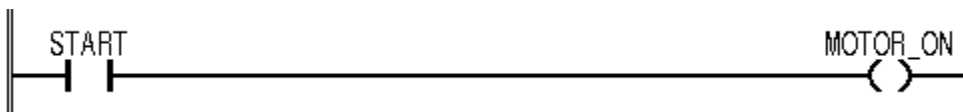
It is the case that function (for example ABS) that does not need object in IL. You should delete the object.

◆ Operand is not assigned!

Variable or integer is not at contact or coil.



You should attach variable or integer value at used contact or coil.



◆ Too many characters in the operand.

The case characters if inputted object is too many. You should input the object below 16 characters.

◆ Wrong data type of operand.

It is the case that data type of the object does not match the operator or data type of Current Result in IL.

◆ Wrong operand string found.

It is the case that the string that is inputted as the object does not match the word form.

◆ Cannot find the function/function block.

Confirm that library is in the library that is designated in option.

◆ Hot Restart Backup Error.

On operating the program, it causes when hot-restart time is exceeded at the stoppage of electric current is restored, or the restart is operated by parameter **because** it is impossible to operate the hot-restart operating. Because operating data, which is needed in hot-restart operating, was not done backup.

◆ Wrong line number is designated.

It is the case that you input wrong line number in FIND. You should input it within last line number.

◆ One of ANY\_\_NUM data type expected.

The object (for example: SINT, INT, DINT, REAL, etc), which has a general concept of number, has to be given for the operator (for example: ADD, SUB, MUL, DIV, etc), which has a general concept of the number. Especially, it causes when you give the object (for example: WORD type) to ADD.

◆ Variable used as an array index should be INT type.

It causes when the variable type of the ARRAY index is not INT.  
You should use INT variable type in ARRAY index.

◆ Not ARRAY type variable.

You cannot select array number because present selected variable type is not ARRAY type.

◆ Variable used as an array index is not defined.

It is the case that INT variable B, which expresses array element such as A [ B ], is not declared in declaration part.  
You should declare B as INT variable in declaration part.

◆ Boolean array variables should be allocated at the address of multiple of 8.

When you declare an address in GLOFAPLC, beginning position of BOOL array should be at the beginning of 8-bit unit. Therefore, if you declare user definition position at the position, which is not 8-multiple such as %MX7 then you will have an error message.

◆ BOOL type operand expected.

The object of BOOL type should be given in LD contact or BOOL output.

◆ Cannot use this kind of Operators to CONSTANT variables.

It is the case that you use the command that can change the value of ST for variable that is declared as CONSTANT.

◆ CPU Error

On the composition of the multi-CPU, it is the case that other CPU error causes. You should modify this CPU error and execute again.

◆ CPU Combination Error

Reboot the PLC.

◆ The data of DATE AND TIME is indicated in 1/100 second.

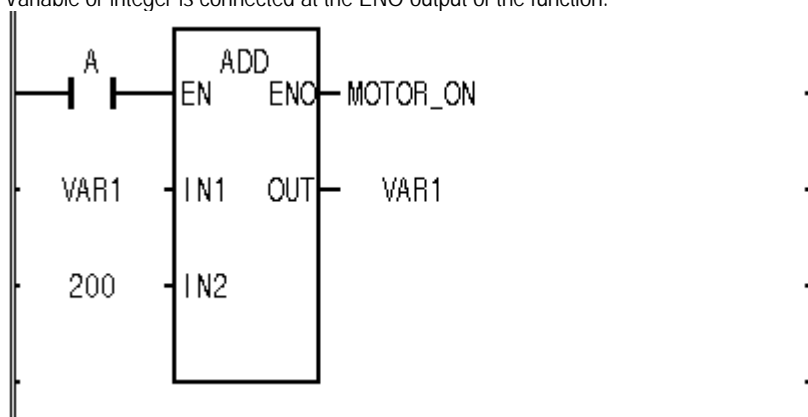
When you input the value of DATE AND TIME, you cannot input the 1/1000 second unit.

◆ END operator is duplicated.

You cannot use over one END command in one program or one action/transition.

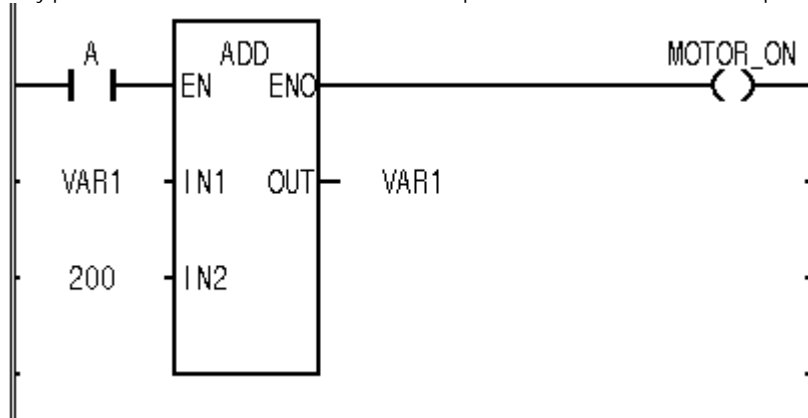
◆ ENO can't be assigned to variable!

Variable or integer is connected at the ENO output of the function.





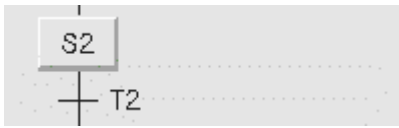
Only power line can be connected at the ENO output of the function. Connect it at power line or nothing.



- ◆ Not defined as a FB instance.  
It is the case that the inputted sting as the instance name is not the string that is declared as FB instance.
- ◆ This FB output variable type isn' t an array.  
The type of the FB output variable must be array. Confirm output variable type of FB and input again.
- ◆ A kind of FB is not matched.  
The inputted instance name is the string that is declared as different kind of FB instance.
- ◆ This variable is not a FB output.  
It must be output variable of FB. Confirm FB and input again.
- ◆ Abnormal Gate Array.  
Reboot the PLC.
- ◆ Can' t use a GLOFA F net or GLOFAM net.  
After confirming the communication module for PC is fitted in PC, if it is, then you should confirm that the declaration of port and base address is correct of not, and connect again.
- ◆ This data type is not supported for GM3-GM5  
Data type (for example:REAL, LREAL, LINT) applies only for GM1-2, therefore GM3-5 are not used.
- ◆ There is no I/O cared in that base. Select a base number again.  
You cannot monitor because I/O module is not in selected base.
- ◆ I/O Module Read/Write Error  
On operating, it is the case that the data of I/O module is not accessed normally. Therefore, replace the module of wrong slot and execute again.
- ◆ Abnormal I/O parameter  
It is the case that the download does not success because of error on downloading the program. Download again.
- ◆ Can' t Monitors according to the order of I/O parameter.  
Can' t monitors because of the present I/O is not matched with I/O parameter in project window.
- ◆ It is not an IL operator.  
It is not IL operator that is used in GMWIN.

- ◆ Number of lines exceeds IL capacity.  
IL cannot edit over 32000 lines.
- ◆ Can't load LD cursors.
- ◆ M area can be monitored at only RES area.  
Declare direct variable area with resource.
- ◆ Abnormal O/S Watchdog  
It is the case that the watchdog error is caused by Os program.
- ◆ Abnormal O/s RAM  
Reboot the PLC.
- ◆ Abnormal O/S ROM  
Reboot the PLC.
- ◆ Q area cannot be monitored at Configuration area.  
The direct variable area cannot be designated as configuration
- ◆ Cannot define RETAIN or CONSTANT the variable located at %I or %Q area.  
You cannot declare RETAIN, CONSTANT besides variable that is allocated in automatic variable or %M area.
- ◆ Cannot assign initial value to the variable located at %I or %Q area.  
You cannot give initial value besides variable that is allocated in automatic variable or %M rear.
- ◆ Cannot assign direct address to this array variable which is out of I/Q address range.  
In care that array is the variable which is allocated in I, Q area by user definition, if total size exceeds maximum of the I,Q area from the beginning then error can be caused by memory overlap. Therefore, make array size small.
- ◆ RTC Data Error  
Confirm that there is an error of battery or not, if it is not then set the time in GMWIN.
- ◆ Abnormal RTC  
Set the time again.
- ◆ You cannot insert SFC element any more.  
You cannot insert new element any more because it exceeds the size of SFC program.
- ◆ Impossible to delete SFC transition variable.  
User cannot delete/modify SFC transition variable because it is inserted in GMWIN automatically.
- ◆ Impossible to modify SFC transition variable.  
User cannot delete/modify SFC transition variable because it is inserted in GMWIN automatically.

◆ Tn has no name



- 1) You should input the transition name and make operating condition program.  
Or Designate BOOL type variable in the transition  
Input it by selecting toolbox-zoom in menu or double-click at the position of transition.



◆ VAR\_IN\_OUT variables cannot be placed the first item of INPUT/INOUT variable list.

VAR\_IN\_OUT variable cannot be at the beginning of the input/output variable of function block, because of the power line on LD.

◆ A constant cannot be given to VAR\_IN\_OUT parameter.

VAR\_IN\_OUT variable cannot have integer value because its address is transferred to parameter.  
(Special characters)

◆ BOOL type operator is needed before 'C' or 'N' specifier.

The object of the BOOL data type must be used in the variable that has suffix of 'C', 'N' (ex. CALC, CALN, JMPC, JMPN).

◆ Cannot Store to directly represented or assigned input variables(%I).

You cannot use command that substitute the value in the input direct variable area.

◆ Transition name : Output transition condition to variable TRANS.

You have to output the condition to TRANS variable in transition program.

Ex) LD %I0.0.0  
ST TRANS

◆ Cannot print %s!

It is the case that you cannot print selected file.  
It causes when printer has a problem.

◆ <Program name> : <direct variable name> is not in M area. Set M area of basic parameters to large size

Because selected variable as <direct variable name> exceeds declared M area, You should declare the variable again(ex: %MW20000%MW20), make it large with selecting the project-option in menu(ex: 4K Byte 8K Byte).

◆ Program <program name> : Variable <variable name> is not declared or type mismatched in Global Variables.

Declare the variable <variable name>, which is declared by VAR\_EXTERN in <program name>, or if it is declared already, then confirm that the type is same.

(See also configuration global variable edit(in case of GM! And multi resource) or resource global variable edit).

◆ Cannot give duration of task which is under 10 ms.

If you give the task operating interval that is smaller than 10ms on the definition of interval task, then it is negligible. Therefore, you should give time interval, which is over 10ms.