

# User's Manual

## PMU-MASTER Operating Manual

(PMU-200/300/600 Series Software)

LG Industrial Systems Co., Ltd.

## Chapter. 1 Start-Up PMU - MASTER

Thank you for purchasing the **PMU MASTER** Software Package.  
In order for effective use of this software, please read this operational manual to the end.

### NOTE

1. LG has the sole industrial property rights for this product.
2. This software and/or operating manual may not be partially or fully copied without authorized permission from LG.
3. LG cannot be held responsible for any consequences resulting from the use of the manual and/or product.
4. The information recorded in this operational manual may change without prior notice due to product upgrade.

"The product standards for this product may change due to functional upgrade without prior notice."

**1-1. System Requirements for PMU MASTER Installation**

**PMU MASTER** Software is designed to operate on IBM compatible PC.  
 To minimize complications while using this product, please refer to the "Operational Standards" chart below.

| ITEM                         | OPERATIONAL STANDARDS   |
|------------------------------|---|
| User's Standard              | Use IBM PC Compatible Computer (above 386DX level)<br>- Above 486 DX2/50 Recommended  |
| Memory                       | Above 4 MB<br>- Above 8 MB  |
| FDD                          | One 3.5 inch drive  |
| HDD                          | More than 10 MB availability<br>- not the total size of the hard disk                 |
| Serial Port                  | One port for Mouse use<br>One other Communication Port (For data transmission to PMU) |
| Graphic adapter and monitor  | Above S-VGA<br>(Above 256 Colors Recommended)   |
| Key board                    | PS/2 Type(101 Keys)   |
| Mouse                        | Mouse for Windows Use   |
| Printer                      | Printer for Windows Use   |
| Recommended user environment | Smooth operation in user environments<br>above MS-Windows 3.1, Windows 95             |

Note:

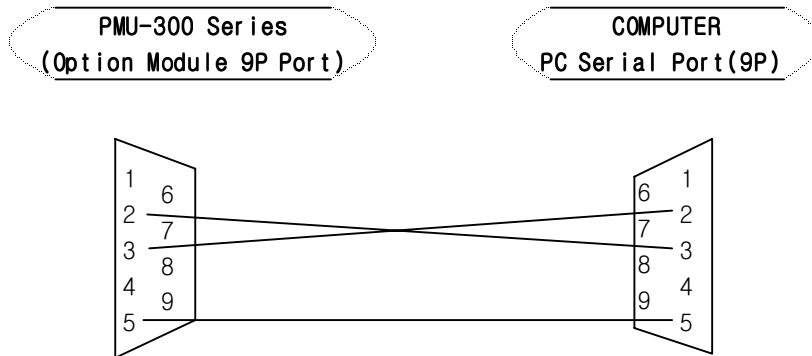
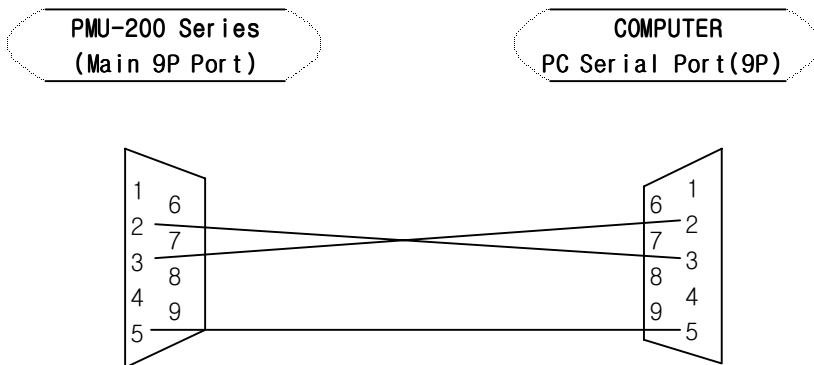
- 1) **PMU MASTER** Software may not operate under different standards other than the above specified "Operational Standards."

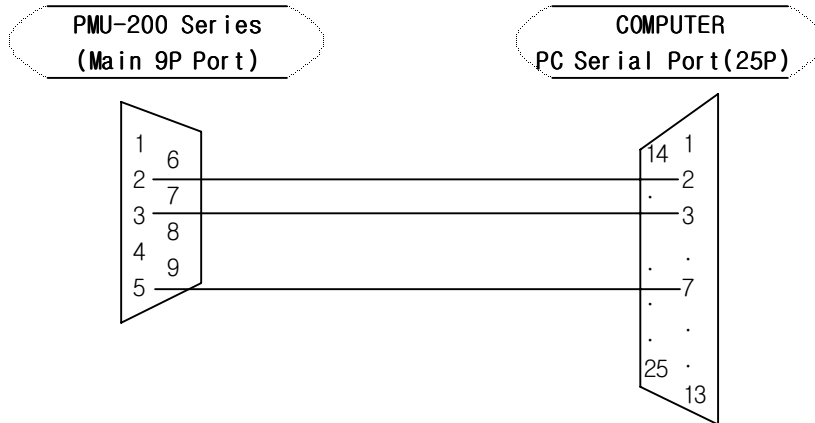
## 1-2. Cable Standards for Communications with PMU Series

To ensure communication between PMU Master Software and PMU Series, please connect the ports as below:

PMU Communication Support Functions

- Project Up/Down Loading Function
- Link File Up/Down Loading Function
- Com. Port Selection
- Alarm File Up/Down Loading Function (PMU-200/300/600)





### 1-3. Installing PMU MASTER

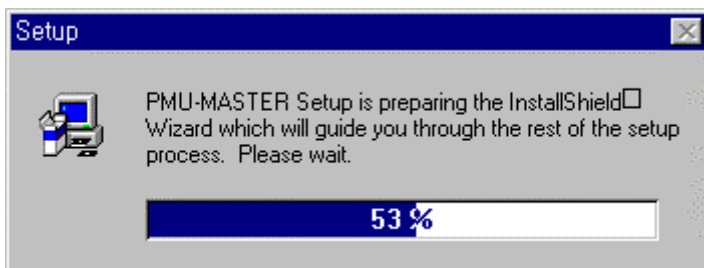
#### 1-3-1 PMU Master Installation

##### #1. Check Contents of PMU MASTER Software Package

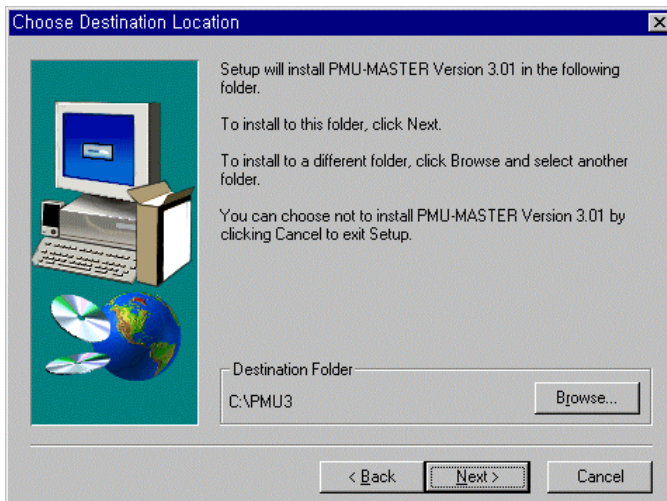
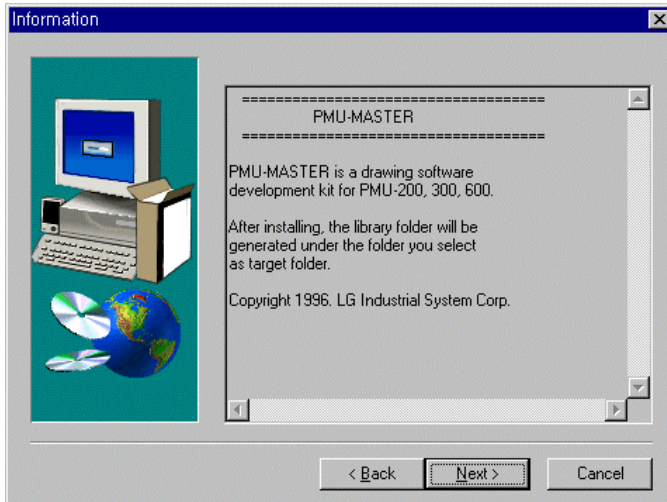
- 1) PMU MASTER
  - PMU MASTER Software Operational Manual
  - Two 3.5 inch Diskettes
  - One Communication Cable(9:6, 5M)

##### #2. PMU MASTER Software Installation Method

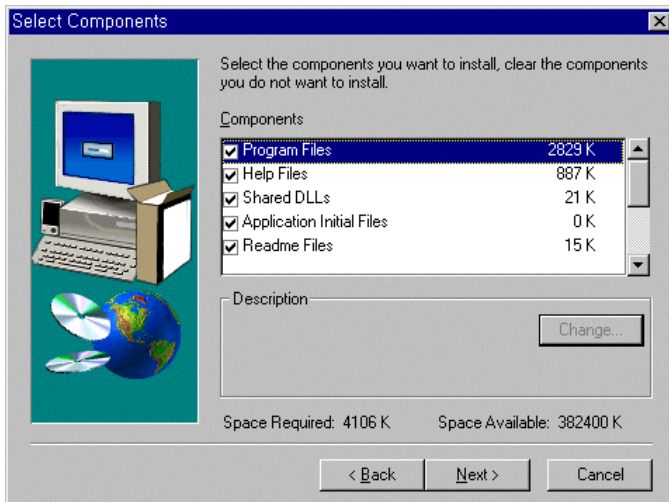
- 1) Run Windows 3.1 or Windows 95
- 2) Insert the "3.5 inch diskette" from the PMU MASTER Software Package into A:(or B:).
- 3) Open the BASIC PROGRAM GROUP in Windows and Run FILE MANAGER.  
Or, Open Explorer and Select A: (or B: ) Drive.
- 4) With the mouse, click the drive icon that the "Setup Diskette" is inserted in.
- 5) Double click "Setup.exe" from the file directory.



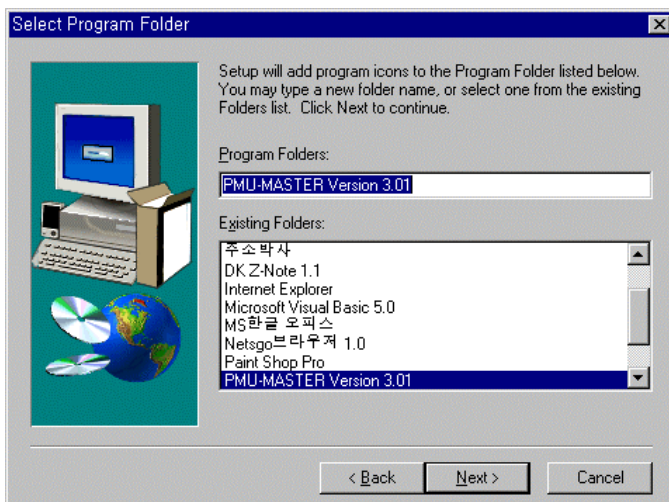
Input the directory name of PMU MASTER you wish to install  
(If not specified, "C:\PMU3" directory will be created.)

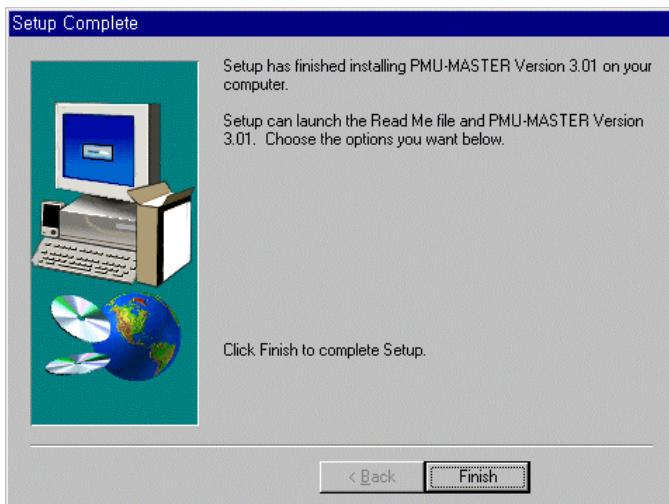






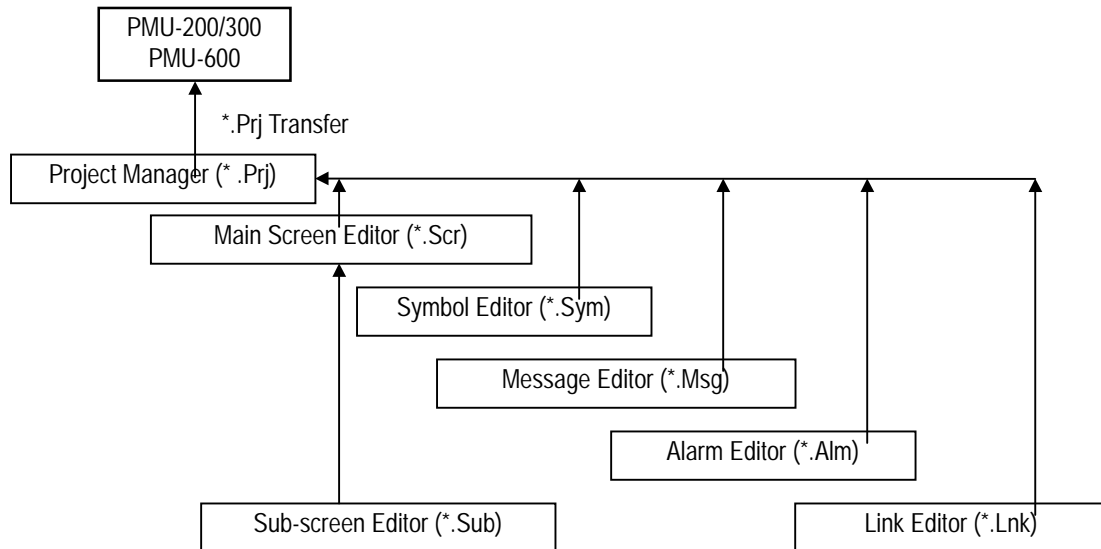
6) Upon completion of Installation, "PMU MASTER" Group will appear in Windows. The 6 icons below will appear in the Group.





### 1-4. PMU MASTER Structure

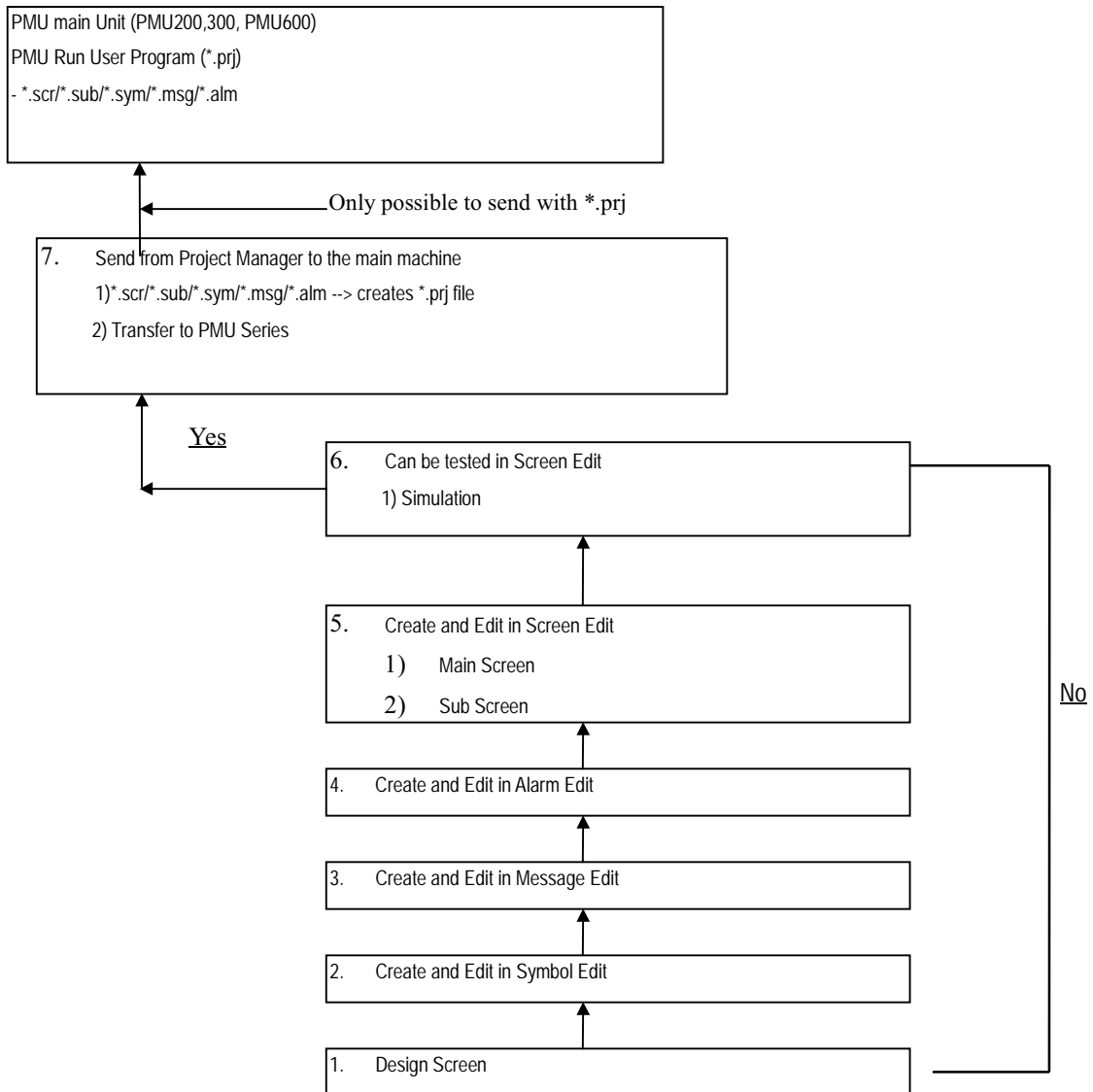
This Software Package runs on multi-tasking Windows system, and is composed of 7 function editor and selection keys.



1-5. PMU MASTER Creation Method

PMU MASTER Software allows the user to run PROJECT FILE by grouping Main/Sub Screen, Symbol/Message/Alarm, etc. functions into one.

- Project File is saved as “\*.prj” and includes the type of PMU used for the project as well as the user’s Main/sub screen, symbol/message/alarm, etc. and information on the name of the created file.
- Please refer to the PMU MASTER Creation Method flow chart below.



Note) To transfer edited screens to main machine the user should create project file.  
The Project file may include .scr/sub/\*.sym/\*.msg or \*.alm files