

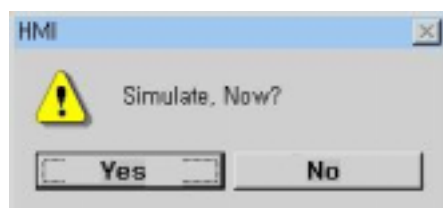
Chapter 8 . Simulation

It is possible to simulate operation without external controller device.

Transmit project file to panel(main unit)

After Transmission is finished, asked whether 'simulate or not'

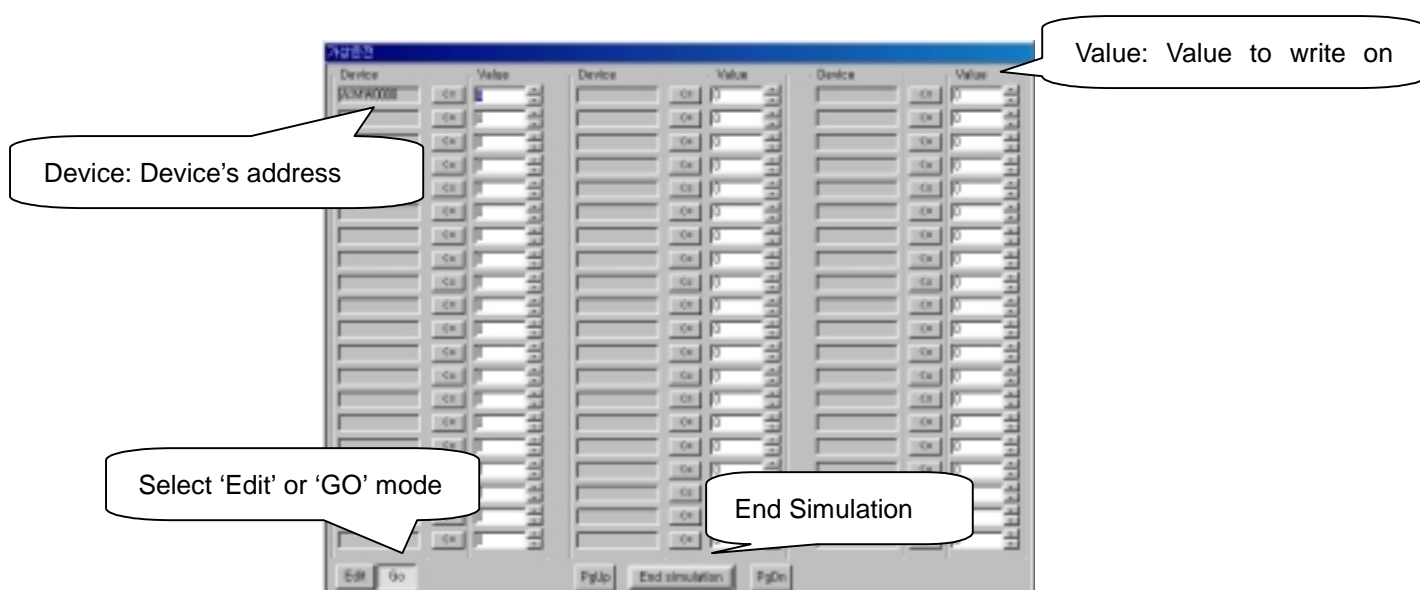
Click 'Yes' to start simulation



Turns to simulation mode automatically.

Simulate by changing value or by transmitting the value

- On 'Edit' mode, write value in the edit box and click '<=>' button.
It results same effect with that external controller sends value
- On 'Go' mode, it shows external controller's value
- If controller address numbers are more than 1 page, change page by clicking PgUp, PgDn
- To end simulation, click 'End Simulation' button



By clicking button, tag on screen is also operated by changed value.

By changing address value on Panel, Designer's value is also changed on 'Go' mode.

To end simulation, click 'End Simulation' button. Machine itself can't end simulation.

It goes back to initial screen by pressing 'Exit' button.

Chapter 9 . Download and Upload

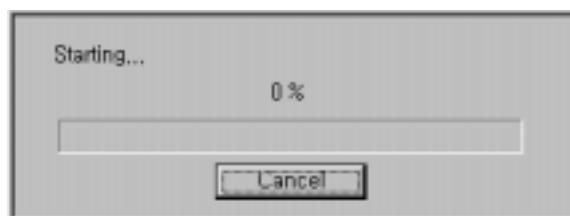
9 . 1 Project File Download

Note

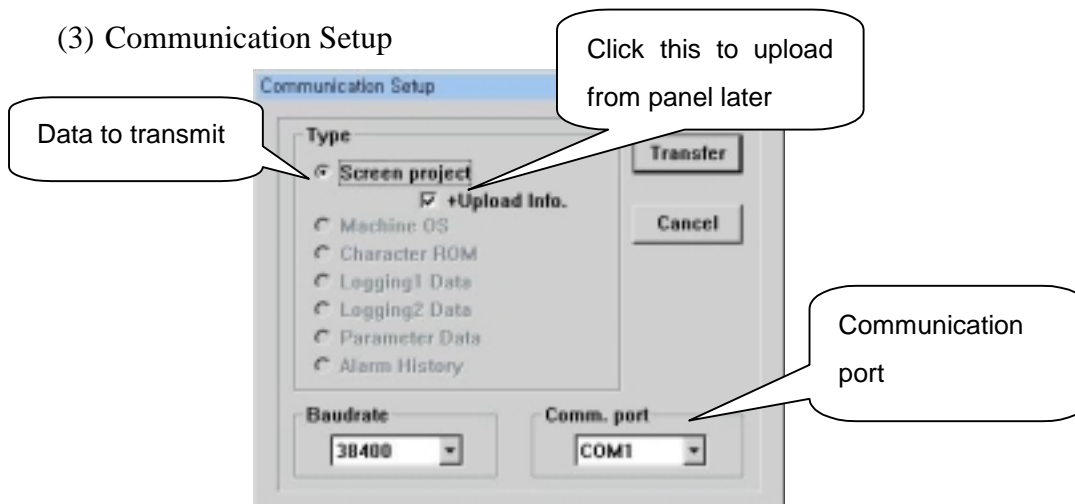
- Connect communication cable between Panel's COM1 port and PC's COM1/COM2/COM3/COM4
- Create project file and save.
- Turn on power

(1) To transmit the created file from PC to machine, save the project file at first.
Write file name and select folder to save. Click 'Save'

(2) Execute Compiling



(3) Communication Setup



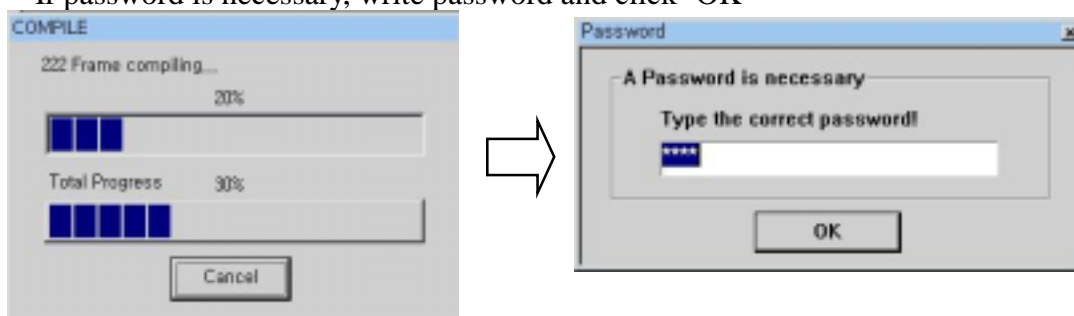
To transmit project file, click 'Screen project' radio button

- Port : PC's COM1/COM2/COM3/COM4
- Upload Info. : It's essential to check 'Upload info.' to upload from panel to PC later. Without checking this, uploading data is not allowed.

Note Upload Information

'Upload Information' needs a little more data volume. To protect screen data from being uploaded by someone, it is effective not to check 'upload information' check box.

- (4) Connect download cable between PC and Panel. And click 'Transmit' button.
- (5) To download new project file, 'alarm history, logging data, parameter data' will be deleted. If you need back-up file, upload data before downloading. Click 'Yes' to continue
- (6) Compiles programmed file. After compiling, password dialog box appears. If password is necessary, write password and click 'OK'



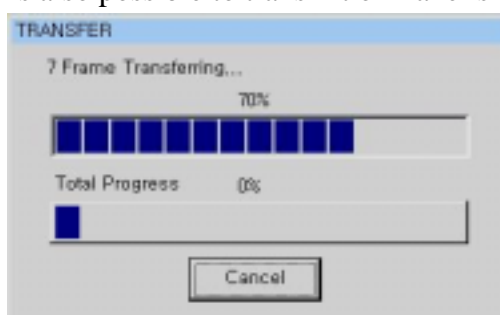
Caution Password

when no setting password. So, it is not positively necessary to write password before transmission.

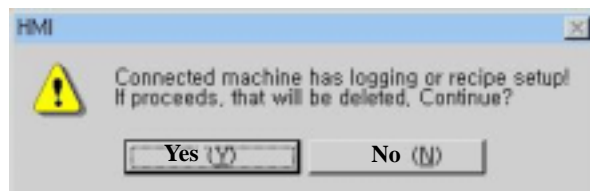
But, for data security, write password on panel.

To download project file after setting password on panel, it needs to write same password with panel's password.

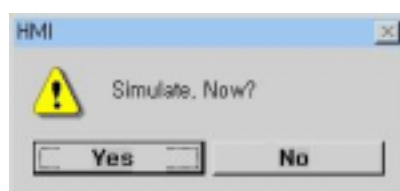
- (7) Transmit file. It is also possible to transmit on Panel's running.



- (8) To cancel transmission, click 'Cancel' button. If there is logging data or recipe(parameter data), next message appears



- (9) After finishing transmission, a dialog box -asking whether will simulate or not- appears. Click 'Yes' to simulate.



- (10) If 'No response' message shows, check up communication port, cable, model of product, and try again.
- (11) As transmission is completed, 'Transmission completed' message is shown for 2 seconds and turn back to menu mode or running mode.
- (13) If error occurs, it shows error message saying 'project file is abnormal. Do you want to initialize?' To initialize, click 'Yes'
After finishing download, touch () button on screen's right-up. Panel begins running.

- (14) Transmission on running

To transmit new file on running, Panel stops all communication with controller(PLC, etc) and receives the file.

On receiving file from PC

Writing inner memory

Completed

After completed receiving project file, Panel(Main unit) begins to run by new file. Initial screen and communication parameter follows initial setting value.

 **Note**

If there is parameter data in project file, after completion of transmission, programmed parameter is loaded to parameter table (SRAM) automatically.

9.2 Font Download

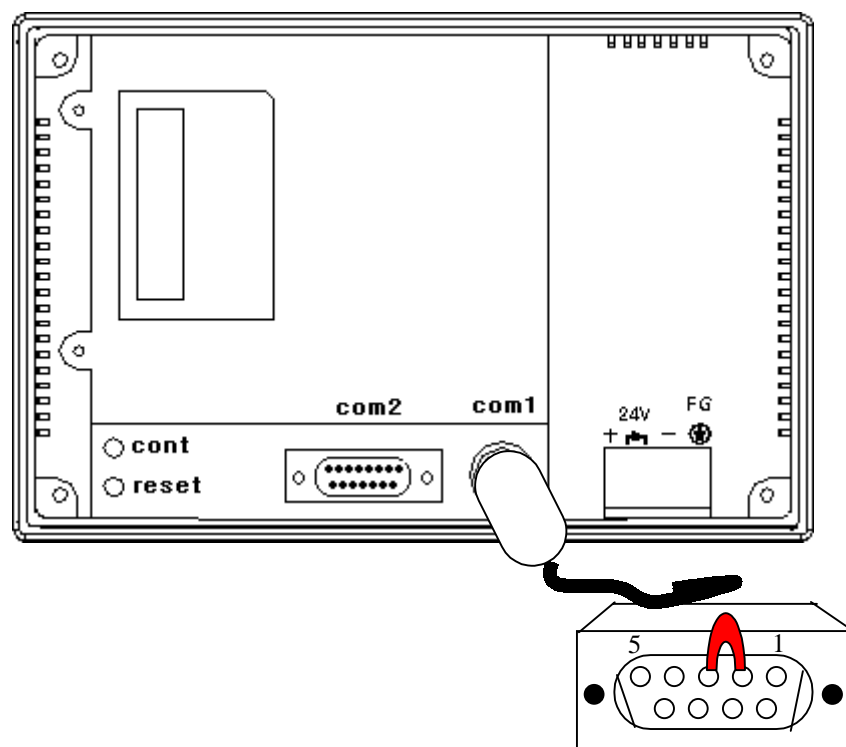
 **Caution**

Do not use this function without confirming of our company!

Use Com1 port, and remove the cables connected to another ports.

- 1) Connect download-cable to Com1.

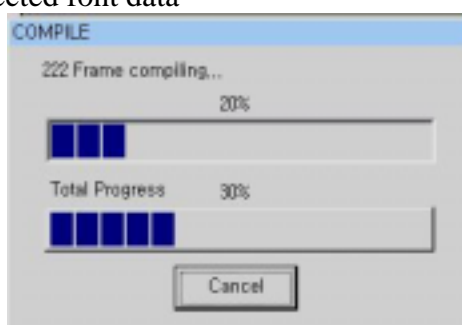
Turn off machine's power and short circuit between #2 & #3 pin of Com1 6pin connector, or short circuit between #2 & #3 pin of 9pin connector in download-cable. And turn on power. Main unit changes to O/S download mode as follows.



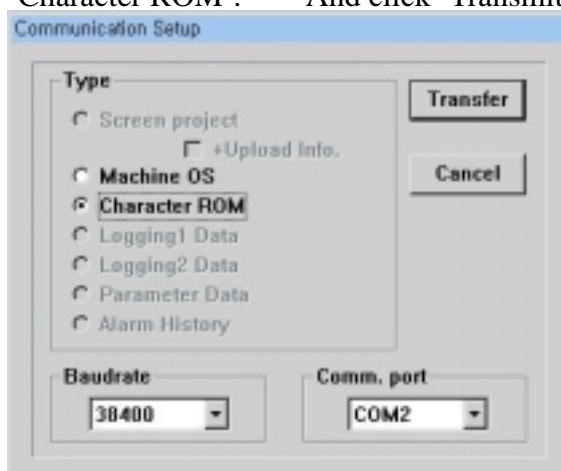
O/S DOWNLOAD MODE

And remove short circuit between #2 & #3 pin!

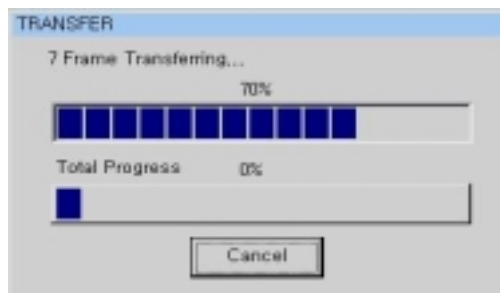
- 2) Run S/W and select 'O/S, Font' menu of 'Transmit' menu.
- 3) Select "*.fon" data to download
- 4) Compiles selected font data



- 5) Check 'Character ROM'. And click 'Transmit' button



- 6) Next message box appears.



After completion of transmission, You must turn off and on to start working.

9.3 O/S Download



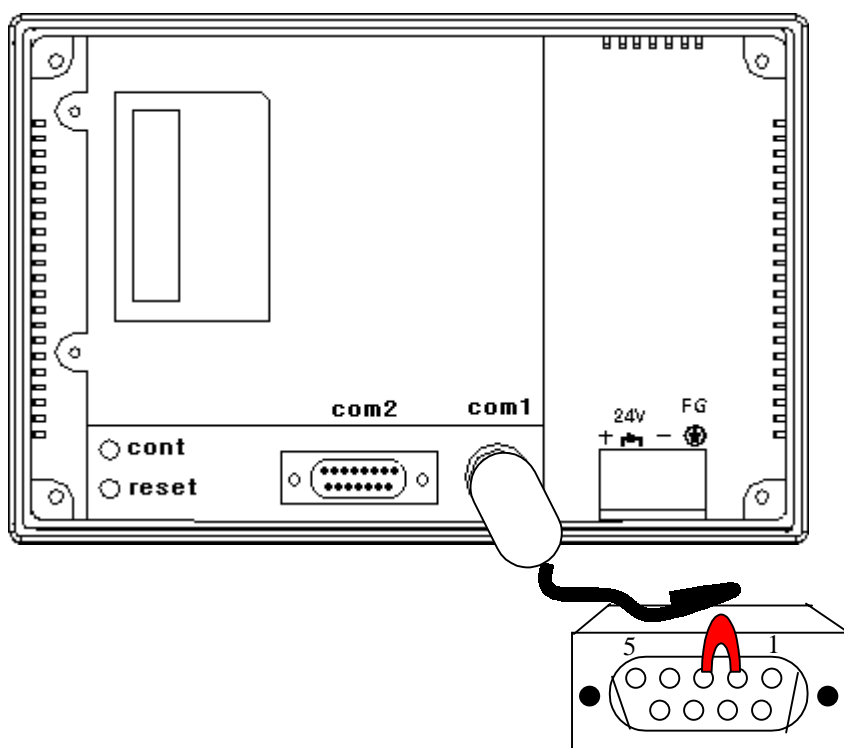
Caution

Do not use this function without confirming of our company!

Use Com1 port, and remove the cables connected to another ports.

1) Connect download-cable to Com1.

Turn off Panel's power and short circuit between #2 & 3 pin of Com1 6pin connector, or short circuit between #2 & 3 pin of 9pin connector in download-cable like following picture. And turn on power. O/S download mode is shown as follows.

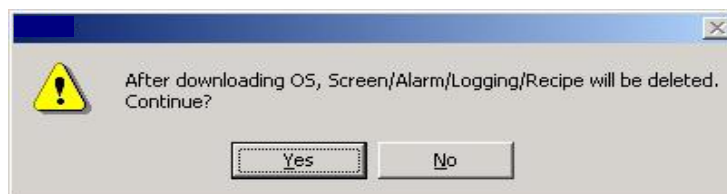


O/S DOWNLOAD MODE

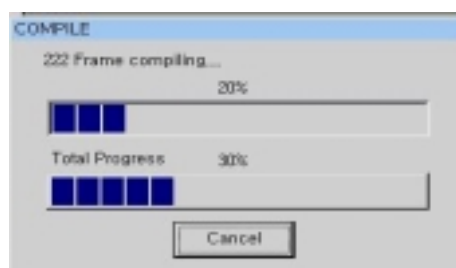
And *remove short circuit* between #2 & #3 pin!

- 2) Run S/W and choose 'O/S, Font' menu of 'Transmit' menu.
- 3) Select "*.bin" data to download

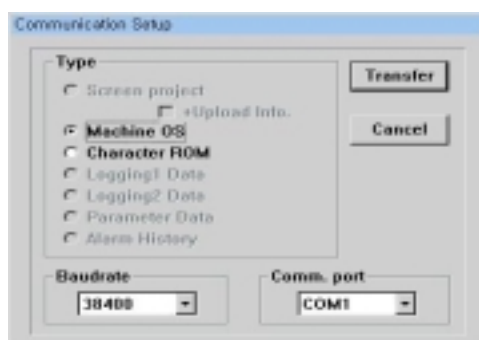
- 4) Compiles selected O/S data. After finishing transmission, Panel reboots and all project data are deleted. So, it needs to upload screen file, logging data, parameter data, alarm history, etc to reuse. Before transmission, next message appears. Click 'Yes'



And following compile message appears.

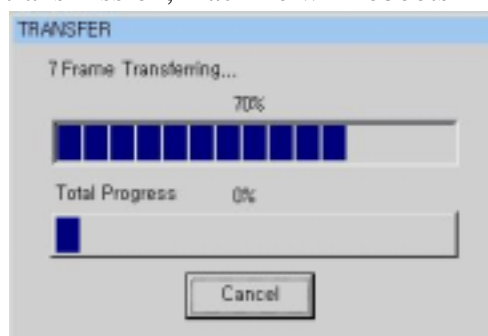


- 5) Click 'Machine O.S' radio button as follows. And click 'Transmit' button



- 6) Next message appears.

After completing transmission, machine will reboot in 2~30second.



[Caution : Don't turn off power until machine reboots with beep by itself]

9.4 Upload

To upload, a downloaded project file should include 'Upload Info'.

Select 'Upload' menu of 'Transmit' menu and write transmission speed(bps), port and determine which ones to be uploaded(logging1~8, parameter, alarm list)

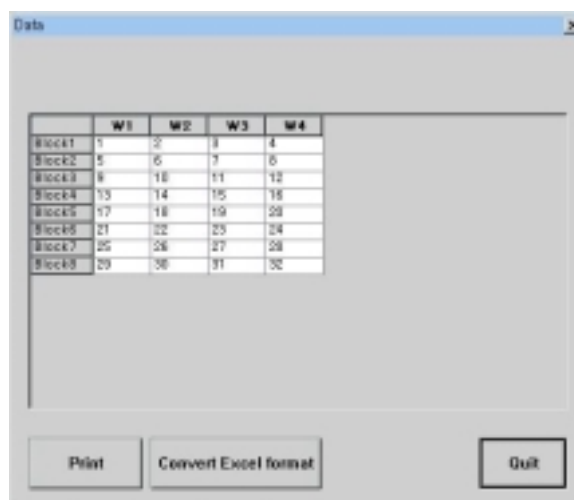


[Step 1. Select file to upload]

[Step 2. Determine file's name to save uploaded data]



[Step 3. Write password]



[Step 4. Example of Recipe upload]

In case of uploading a project file which is not includes 'Upload Info' or if the project file doesn't includes 'recipe, logging, alarm history', error message shows as follows.

