

7.17 Extended String Tag

Extended character string tag displays ASCII characters of data value of a certain position among selected logging (recipe). This tag is same with character string tag except data source.

Displaying character string is a converted character from ASCII value of memory data of block or word of selected logging or recipe to read as character string.

(1) Extended Character String Tag Registration

- 1) After selecting extended character string tag in pull down menu, click left mouse at the position you want in screen.
- 2) Press confirm after inserting extended character string starting position and number of characters in extended character string.

7.17.1 Specifying Contents

(1) General

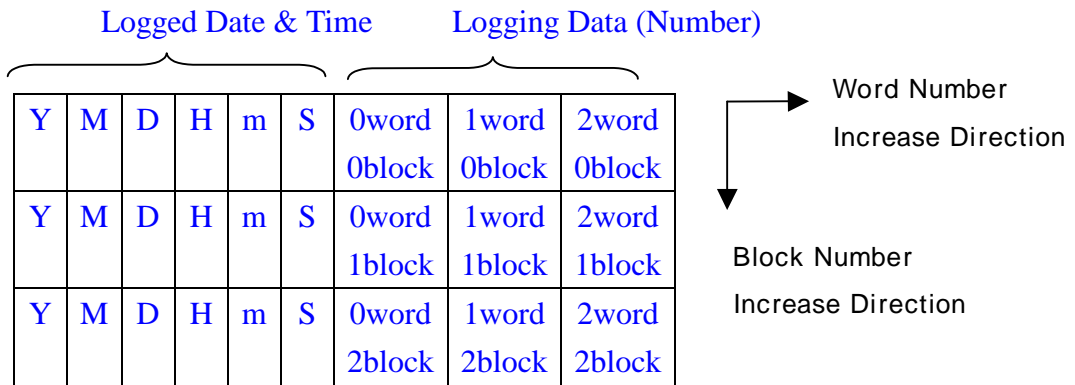
- 1) Character String Starting Address: Starting position of memory (logging/recipe) to be converted into character string.

First, select type of character string, to say, choose one among logging 1~logging 8 and Recipe (R).

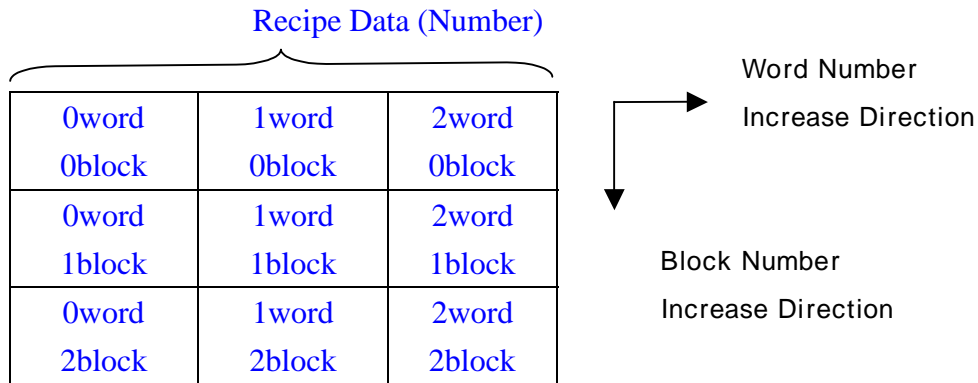
In case of logging, you can specify the data type of column between data/time and character. In case of recipe, there is only character type. But in case logging, data/time value hardly has ASCII value. So, seldom use.

After selecting “Character” in extended character string, selected block and word corresponding data converted into ASCII as many as selected character number. [Here, scanning character direction is word direction.](#) For example, A extended character string tag reads 3 characters (8bitX3) from 1st word of 0 block, it will display ASCII value of scanned 1st word and 2nd word of 0 block. (At least 2 words are needed in displaying 3 ASCII value)

<In case of Logging>



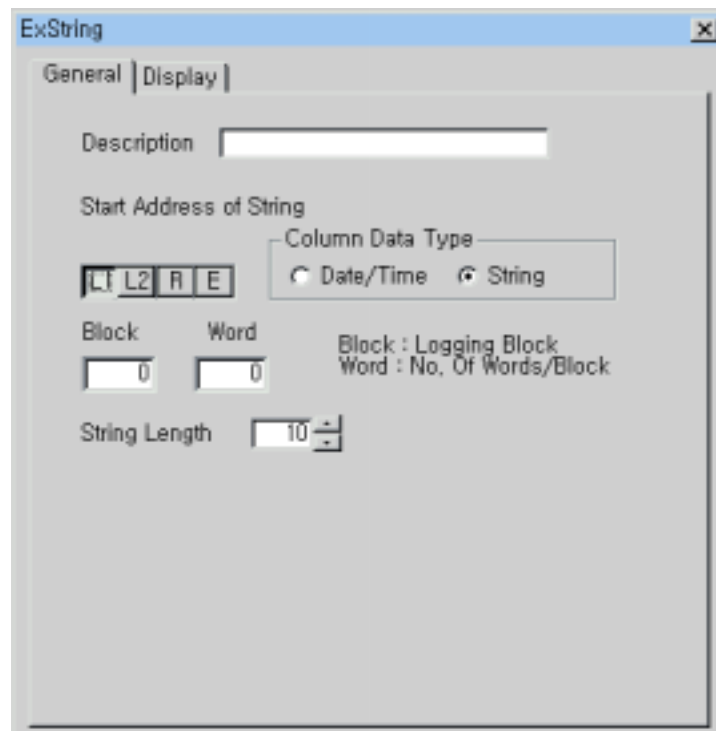
<In case of Recipe>



2) Character Number : Specify the number of character string displayed at screen

The maximum length of character string display is 80 numbers and English character in case of 16X16 font and 32X32 font (In case of 640x480 model). One 16 bit device can display two ASCII(English) character. The number of character string is based on ASCII character and Number. So, if you specify the character string number as 20, display character after reading 10 pcs of word data from starting buffer of character string

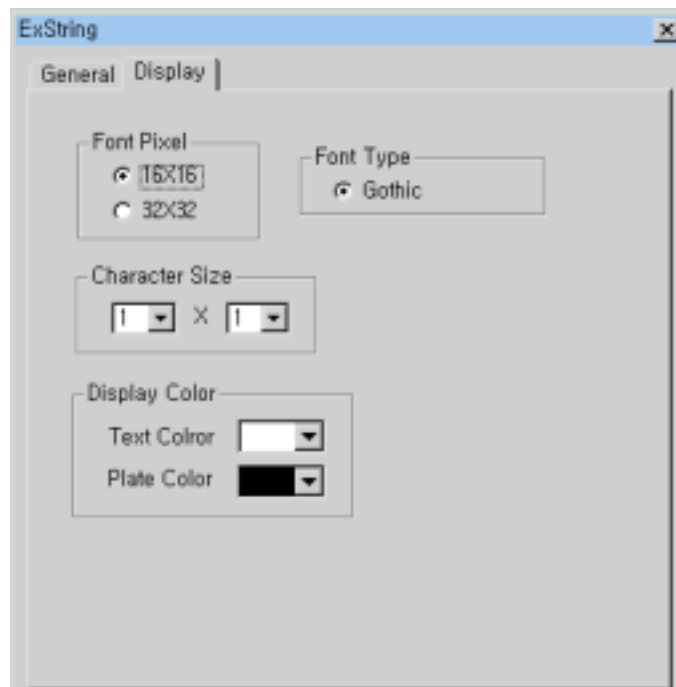
These kinds of characteristics are same with character string tag. ***If there is a NULL in the middle of character string, character string tag or extended character string tag do not display character which is at the back of NULL.***



[General Tab of Extended Character String]

(2) Display

Specify the font, pixel and color of character string.



[Display Tab of Extended Character String]

7.1 7.2 Example of Extended Character String Registration

Register the recipe as block number is 10 and word numbers/a block is 20 and specify the other attributes as you want. From 5th to 8th word string (4 word) have company name ASCII data.

-Register Recipe

	W0	W1	W2	W3	W4	W5	W6	W7	W8	W9
Block1	0	0	0	0	0	0	0	0	0	0
Block2	0	0	0	0	36005	4214	4214	0	0	0
Block3	0	0	0	0	36005	4214	4214	0	0	0
Block4	441	10	0	11	33	36005	4214	0	400	4242
Block5	0	0	485	20	214	6	44	0	0	0
Block6	0	1	0	21	0	36005	4214	0	0	0
Block7	0	0	0	0	0	36005	0	0	0	0
Block8	0	0	0	0	0	0	0	4214	0	0

- Start Address of String: Type -Recipe, Block -3(4th block), Word -4(5th word)
- String Length : 8

[Example. General tab of Extended String tag]

SSSSSSSS

Screen in PC



M2I Corp

Screen in main unit