

7.1 6 Extended Message Tag

Before registering extended message tag, edit the message by message editor in file menu and then register the extended message tag. For more details refer to chapter 4 making message file.

Extended message tag is message displaying tag with the recognition of the value of a block and word among logging and recipe data as message number. So, the data value becomes message number and it shows each message according to the number. This tag is same with the message tag except the data source.

(1) Register Extended Message Tag

- 1) Select Extended Message Tag of pull down menu.
- 2) Select one among logging1~8/recipe in extended message tag screen and specify the “column type” and block and word position and then select other attributes.
- 3) In case of range message, specify different message according to each range.
- 4) In case of variable message, data value shows message number.

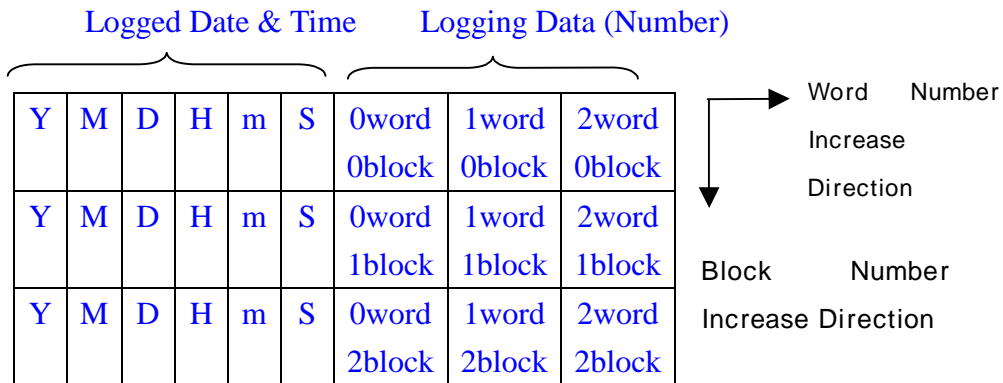
7.1 6.1 Specifying Contents

(1) General

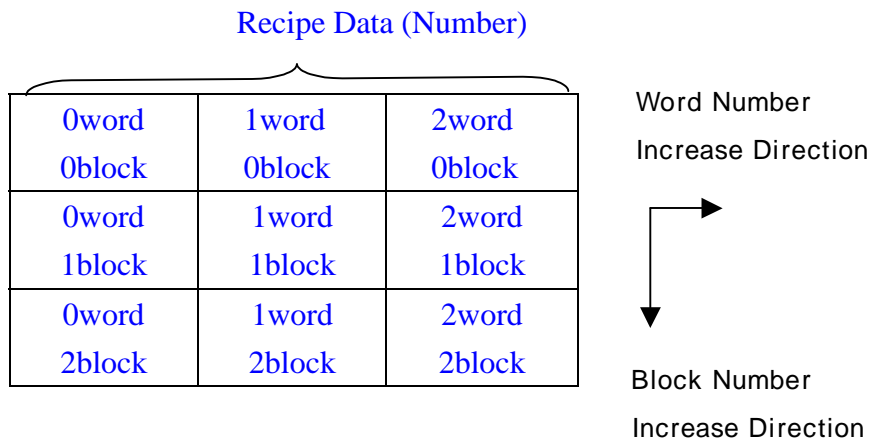
- 1) Group: Select message group displayed from A to Z. Select bit address conditioned when message display.
- 2) Display Address : Content of display message is message number. First, display address type should be selected among logging1~8/recipe. Before specifying address, specify “column data type”. Generally, **specifying number** is desirable in extended text tag. Displaying message as date and time value has no meaning. Specifying block and word number you want to refer to.

The first one of block number and word number is ‘0’.

<In case of logging>



<In case of Recipe>

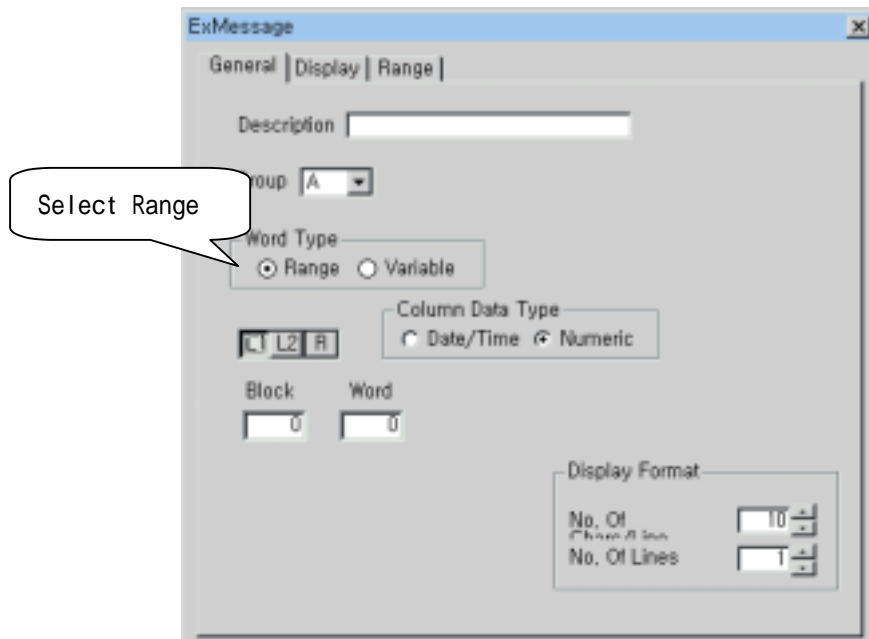


3) Specifying Word Condition

There are two. One is range condition and the other is variable condition.

Range Condition

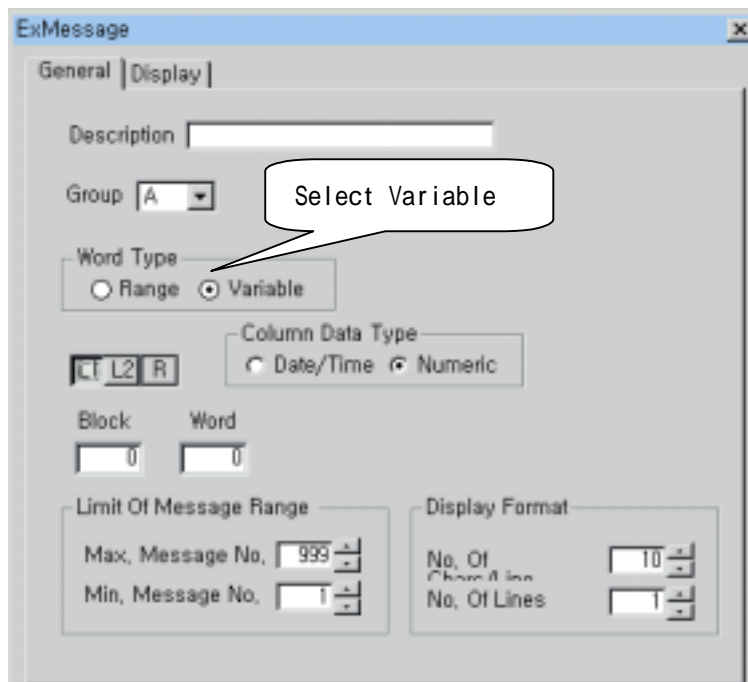
This condition is a type of displaying message according to the value range in range tab. For example, when the value of a logging or recipe of a certain position is from 0 to 100, it displays number 1 message and when the value is from 101 to 150, it displays number 2 message. In this way, it can select the range of message, the maximum 8 types, and color attributes. The available value is -32768 to 32767.



[In case of selecting word range in extended message tag]

Variable Message

Variable message responds to the value of a logging or recipe in a certain position. In case of exceeding the maximum or minimum limit or there is no message number, it display no message and clear the space with background color.



[In case of variable word type in extended message tag]

4) Limit of Message Range

Do not display message if the value of address to be read, to say, logging data value exceeds this range. And do not clear the space with the background color. Available message number is 1 to 999.

5) Display Format

No. of character / line : Specify the number of Character per one line

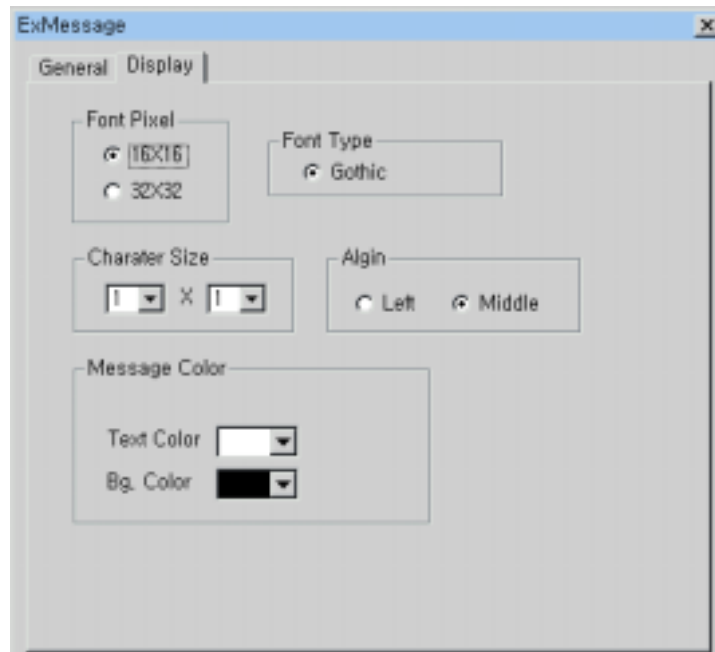
No. of Line : It can specify the number of line. If a message which is scheduled to display exceeds length of a line, redundant characters of message returns to next line.

(2) Display

Specify the pixel, font and color

1) Color

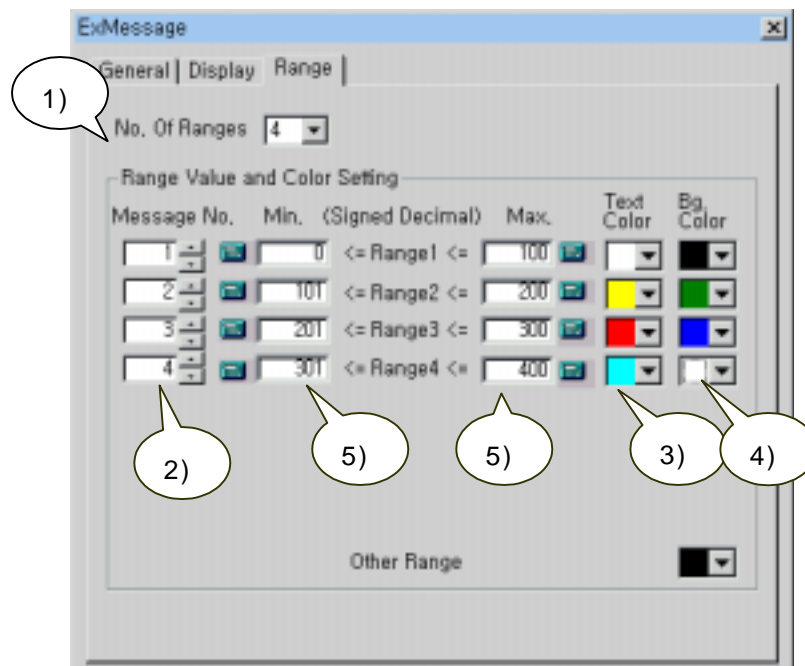
In case of selecting as word variable in general tab : Specify text color and background color



[Display tab in case of word variable case]

(3) Range

This specification can be done just in case of selecting as range condition. It specifies each message number of each range to be displayed and background color and text color.



[Range tab in extended message tag]

- 1) No. of Range
Can specify maximum 8 numbers.
- 2) Message No.
Specify message number of each range in right side
- 3) Specify the text color of message range
- 4) Specify the background color of message range
- 5) Specifying value of each range
Specifying the maximum and minimum value of logging data of each range. To say, specifying range responds to selected message.

7.16.2 Example of extended message tag registration

(1) Example of extended message in variable case

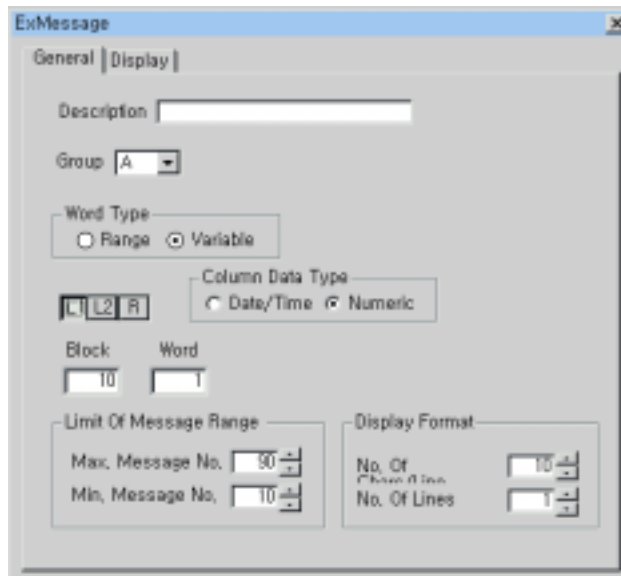
Display A group message by 2nd word value of the 11th logged (logging 1) block and the message range limit is from max. 90 and min. 10. Specify the extended message tag of which text color and background color are black and blue..

1) *First register message file.*

2) *Specify logging 1.*

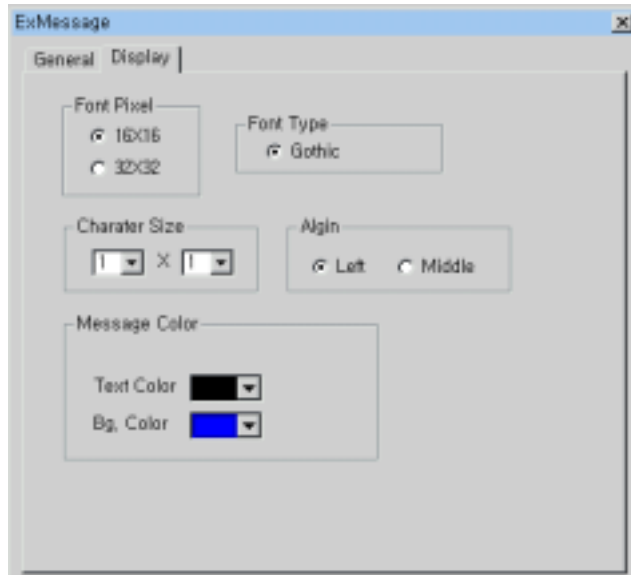
3) *Register extended message tag..*

- Group : A
- Word Type: Variable
- Message Address: block 10(11th) of logging 1 X word 1(2nd) number data
- Message Range Limit: 10~90
- No. of Character/Line: 10
- No. of Line: 1



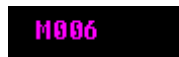
[Example: General Tab of extended message tag in word variable condition]

- Text Color : Black
- Background Color: Blue
- Font : 16x16, Gothic
- Pixel : 1x1
- Align : Left



[Example. Display tab of extended message tag in word variable condition]

4) Result



=> Screen in PC



Download to main unit



=> Example in logging 1, block10 x word1 value is 2, and content of message 2 is "1234"

(2) Example of Range Message

Specify the attributes of logging 1 as you want but specify one block has 20 words. 11th word of 2nd block of logging 1 displays C group message.

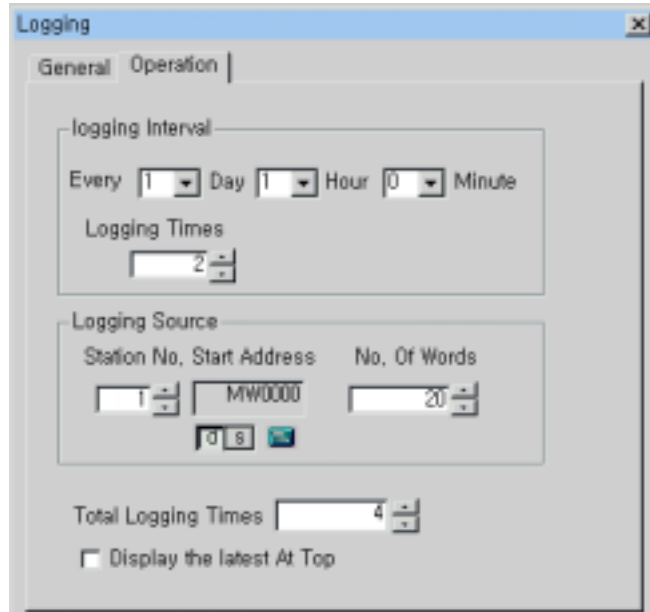
Register block 1 of logging 1 X word 10 but specify the extended message tag as;

in case the value is 0 to 500 display number 10 message of C group and

in case the value is 501 to 999 display number 20 message.

Both two ranges background color is yellow and text color is black.

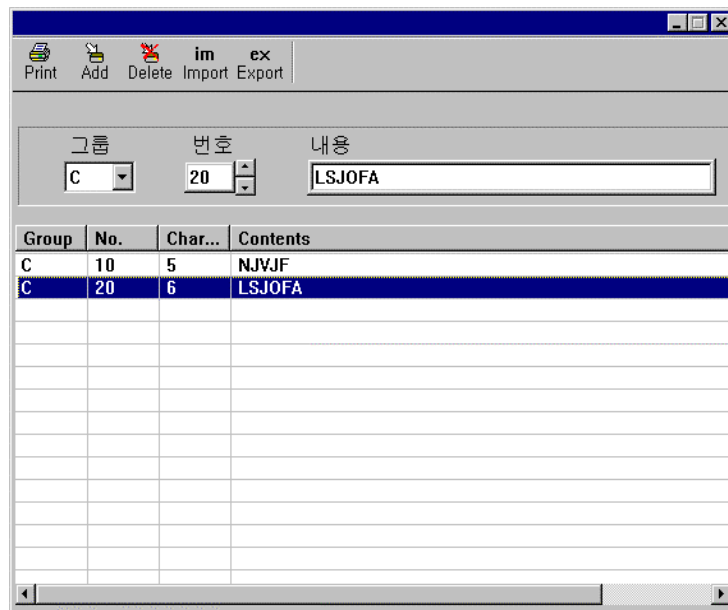
1) Register Logging 1



2) Specify the message file.

- C group : Number 10 message NJVJF

Number 20 message LSJOFA



[Register message file]

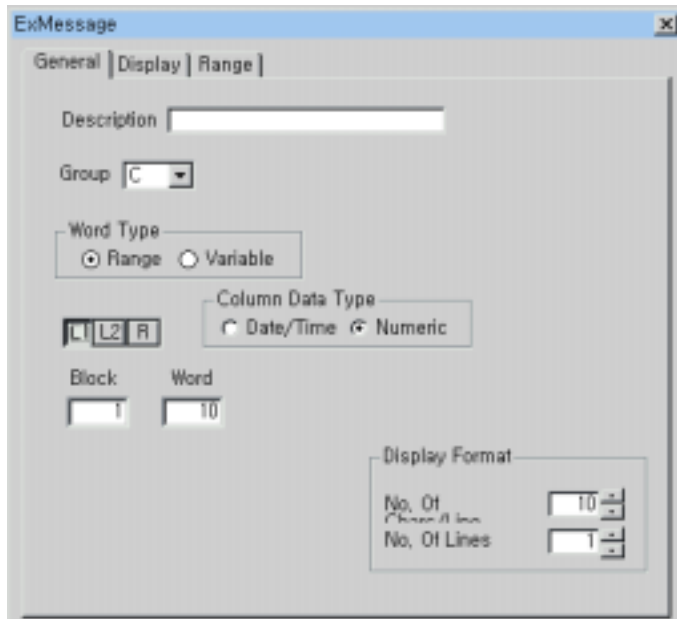
3) Register Tag.

- Group: C

- Device Selection: Word

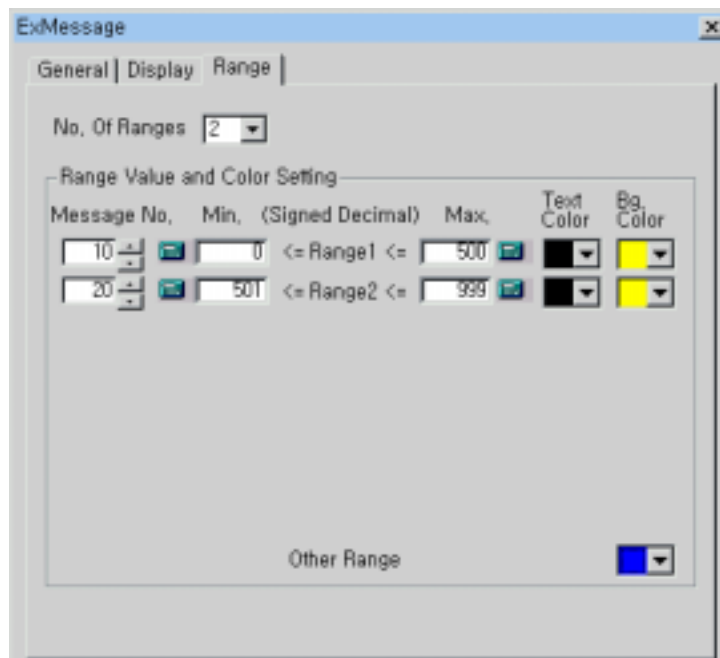
- Word Type: Range

- Address to be read: block 1 of logging 1 X 10 word (2nd block, 11th word)



[Example. General tab of extended message tag in word range]

- Message 10 Range: 0~500, Text Color: Black, Background Color: Yellow
- Message 20 Range: 501 ~ 999, Text Color: Black, Background Color: Yellow
- The other message : Background color: Blue



[Example. Range Tab of extended message tag of word range condition]

4) Result



=> Screen in PC



=> Main unit screen in case the logging value is 891

<Content of Logging 1 >

	0word	1word	2word	3word	4word	5word	6word	7word	8word	9word	10word	...
Block0	324	33	544	56	78	4	4	2	8	120	782	...
Block1	54	3	1	0	0	0	890	1023	32764	233	891	...
...